

Unit 1-429 - Flagler Pointe

1-429 - 1805 N Flagler Drive, West Palm Beach, FL, Palm Beach 33407

Unit Information

MLS Number:	F10472790
Status:	Active
Size:	1,071 Sq ft.
Bedrooms:	2
Full Bathrooms:	2
Half Bathrooms:	0
Parking Spaces:	Assigned Parking,Covered Parking,Guest Parking
View:	Garden View,Intracoastal View,Pool Area View
List Price:	\$415,000
List PPSF:	\$387
Valuated Price:	\$381,000
Valuated PPSF:	\$356

The above valuated price is a baseline figure that does not take into account any specific renovation, upgrade, split, merge, or deterioration of the unit.

Building Information

Number of units:	400
Number of active listings for rent:	27
Number of active listings for sale:	31
Building inventory for sale:	7%
Number of sales over the last 12 months:	27
Number of sales over the last 6 months:	11
Number of sales over the last 3 months:	6

Building Association Information

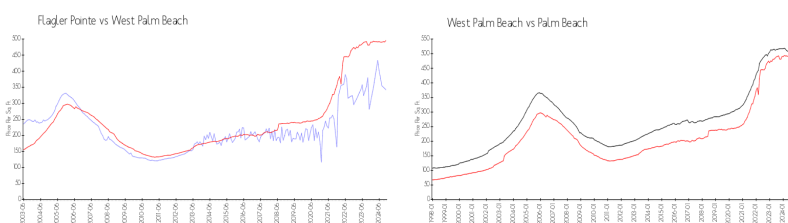
Flagler Pointe Condominium Association of
West Palm Beach, Inc
c/o Castle Management, LLC
1801 North Flagler Drive
West Palm Beach, FL 33407
Phone: (561) 822-9970
Concierge: (561) 833-7024

<http://flaglerpointe.us/Management-Contacts~301897~20085.htm>

Recent Sales

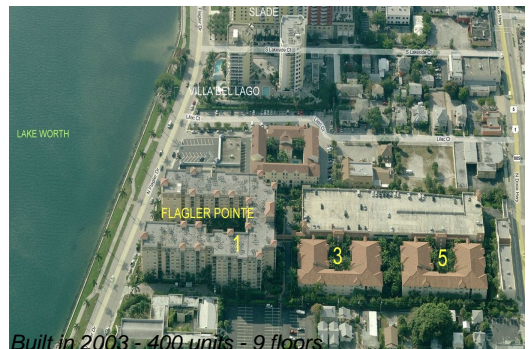
Unit #	Size	Closing Date	Sale Price	PPSF
238	662 sq ft	Dec 2024	\$245,000	\$370
338	662 sq ft	Dec 2024	\$335,000	\$506
217	1,071 sq ft	Dec 2024	\$360,000	\$336
211	658 sq ft	Dec 2024	\$215,000	\$327
418	662 sq ft	Oct 2024	\$250,000	\$378

Market Information



Flagler Pointe:	\$341/sq. ft.	West Palm Beach:	\$496/sq. ft.
West Palm Beach:	\$496/sq. ft.	Palm Beach:	\$466/sq. ft.

Inventory for Sale



Flagler Pointe	8%
West Palm Beach	4%
Palm Beach	4%

Avg. Time to Close Over Last 12 Months

Flagler Pointe	63 days
West Palm Beach	55 days
Palm Beach	61 days