

Unit 336 Brighton H - Brighton at Century Village (A to J)

336 Brighton H - 1-420 Brighton, Boca Raton, FL, Palm Beach 33434

Unit Information

| | |
|-----------------|--|
| MLS Number: | F10482822 |
| Status: | Active |
| Size: | 840 Sq ft. |
| Bedrooms: | 2 |
| Full Bathrooms: | 1 |
| Half Bathrooms: | 1 |
| Parking Spaces: | 1 Space,Assigned Parking,Guest Parking |
| View: | |
| List Price: | \$159,000 |
| List PPSF: | \$189 |
| Valuated Price: | \$104,000 |
| Valuated PPSF: | \$125 |

The above valuated price is a baseline figure that does not take into account any specific renovation, upgrade, split, merge, or deterioration of the unit.

Building Information

| | |
|--|-----|
| Number of units: | 420 |
| Number of active listings for rent: | 0 |
| Number of active listings for sale: | 19 |
| Building inventory for sale: | 4% |
| Number of sales over the last 12 months: | 13 |
| Number of sales over the last 6 months: | 8 |
| Number of sales over the last 3 months: | 2 |

Building Association Information

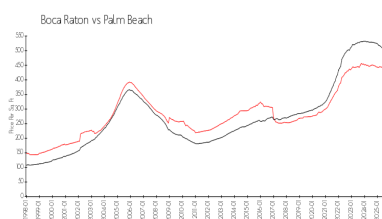
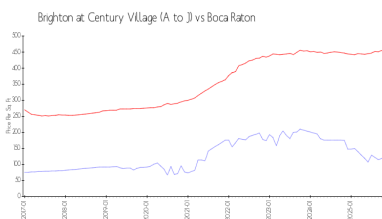
Century Village At Boca Raton
Address: 19296 Lyons Rd,
Boca Raton, FL 33434
Phone: +1 561-451-1211

<https://>

Recent Sales

| Unit # | Size | Closing Date | Sale Price | PPSF |
|--------|-----------|--------------|------------|-------|
| | 840 sq ft | Dec 2025 | \$101,000 | \$120 |
| | 835 sq ft | Sep 2025 | \$95,000 | \$114 |
| 165 | 840 sq ft | Sep 2025 | \$100,000 | \$119 |
| 118 | 720 sq ft | Sep 2025 | \$73,000 | \$101 |
| B | 835 sq ft | Sep 2025 | \$104,000 | \$125 |

Market Information

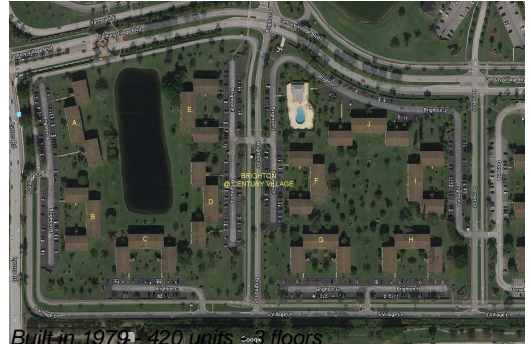


Brighton at Century Village (A to J): \$124/sq. ft.
Boca Raton: \$457/sq. ft.

Boca Raton: \$457/sq. ft.
Palm Beach: \$453/sq. ft.

Inventory for Sale

| | |
|--------------------------------------|----|
| Brighton at Century Village (A to J) | 5% |
| Boca Raton | 3% |



| | |
|------------|----|
| Palm Beach | 3% |
|------------|----|

Avg. Time to Close Over Last 12 Months

| | |
|--------------------------------------|---------|
| Brighton at Century Village (A to J) | 66 days |
| Boca Raton | 80 days |
| Palm Beach | 77 days |