

Unit 1920 N Congress Ave # 105 - Presidential Golfview

1920 N Congress Ave # 105 - 1700 N Congress Ave, West Palm Beach, FL, Palm Beach 33401

Unit Information

MLS Number: F10512246
Status: Active
Size: 850 Sq ft.
Bedrooms: 2
Full Bathrooms: 1
Half Bathrooms: 0
Parking Spaces: Open Space Parking
View:
List Price: \$199,000
List PPSF: \$234
Valuated Price: \$137,000
Valuated PPSF: \$161

The above valuated price is a baseline figure that does not take into account any specific renovation, upgrade, split, merge, or deterioration of the unit.

Building Information

Number of units: 436
Number of active listings for rent: 0
Number of active listings for sale: 19
Building inventory for sale: 4%
Number of sales over the last 12 months: 6
Number of sales over the last 6 months: 4
Number of sales over the last 3 months: 3

Building Association Information

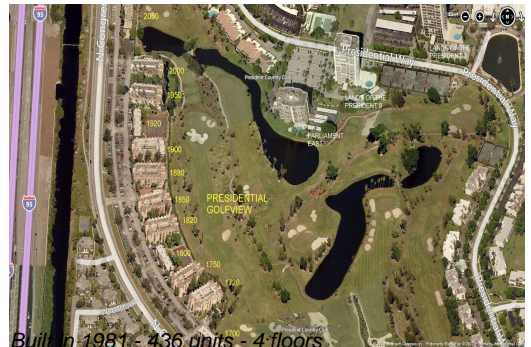
Presidential Golfview Condo
West Palm Beach, FL 33401
1700 N Congress Ave Apt A,
(561) 684-7725
1720 N Congress Ave Apt A,
(561) 471-0981
1750 N Congress Ave,
(561) 688-0892
1820 N Congress Ave Apt A,
(561) 686-6342
1850 N Congress Ave,
(561) 686-1077
1860 N Congress Ave
(561) 686-4948
1900 S Congress Ave Ste A,
(561) 683-7512
2000 N Congress Ave # A,
(561) 684-1531

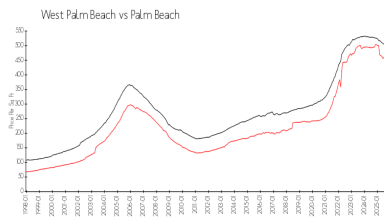
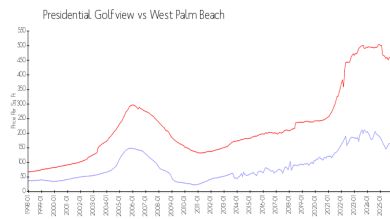
<https://>

Recent Sales

Unit #	Size	Closing Date	Sale Price	PPSF
306	720 sq ft	Dec 2025	\$120,000	\$167
302	775 sq ft	Nov 2025	\$122,000	\$157
403	775 sq ft	Oct 2025	\$130,000	\$168
409	775 sq ft	Jun 2025	\$110,000	\$142
404	775 sq ft	Jun 2025	\$120,000	\$155

Market Information





Presidential	\$164/sq. ft.	West Palm Beach:	\$459/sq. ft.
Golfview:		Palm Beach:	\$452/sq. ft.
West Palm Beach:	\$459/sq. ft.		

Inventory for Sale

Presidential Golfview	4%
West Palm Beach	3%
Palm Beach	3%

Avg. Time to Close Over Last 12 Months

Presidential Golfview	45 days
West Palm Beach	70 days
Palm Beach	77 days