

# Unit 4652 Cadiz Cir - Paloma

4652 Cadiz Cir - 5001-5099 Dulce Ct, Palm Beach Gardens, FL, Palm Beach 33418

## Unit Information

MLS Number:	F10527404
Status:	Active Under Contract
Size:	2,021 Sq ft.
Bedrooms:	3
Full Bathrooms:	2
Half Bathrooms:	1
Parking Spaces:	2 Or More Spaces
View:	
List Price:	\$725,000
List PPSF:	\$359
Valuated Price:	\$724,000
Valuated PPSF:	\$358

*The above valuated price is a baseline figure that does not take into account any specific renovation, upgrade, split, merge, or deterioration of the unit.*

## Building Information

Number of units:	196
Number of active listings for rent:	0
Number of active listings for sale:	0
Building inventory for sale:	0%
Number of sales over the last 12 months:	12
Number of sales over the last 6 months:	6
Number of sales over the last 3 months:	2

## Building Association Information

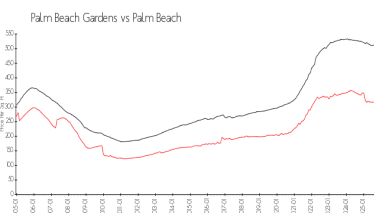
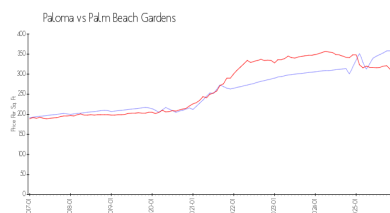
Paloma  
Campbell Property Management  
jupiter@campbellproperty.com  
401 Maplewood Dr. Suite 23  
Jupiter, FL 33458  
Phone: 561-203-7910  
Fax: 561-277-2481

<https://mypalomahoa.com/paloma/home.asp>

## Recent Sales

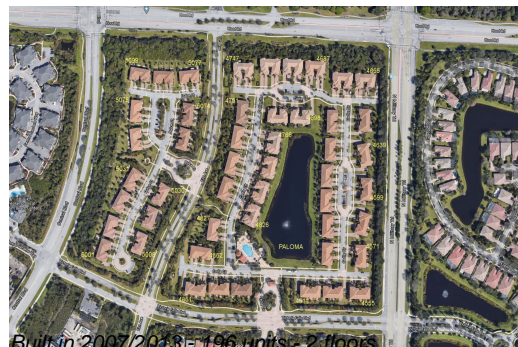
Unit #	Size	Closing Date	Sale Price	PPSF
	1,855 sq ft	Oct 2025	\$662,000	\$357
	1,855 sq ft	Sep 2025	\$660,000	\$356
	1,939 sq ft	Jul 2025	\$650,000	\$335
	2,021 sq ft	Jul 2025	\$715,000	\$354
	2,319 sq ft	Jun 2025	\$715,000	\$308
	2,021 sq ft	Jun 2025	\$750,000	\$371

## Market Information



Paloma:	\$358/sq. ft.	Palm Beach	\$312/sq. ft.
Palm Beach	\$312/sq. ft.	Gardens:	
Gardens:		Palm Beach:	\$453/sq. ft.

## Inventory for Sale



Paloma	0%
Palm Beach Gardens	2%
Palm Beach	2%

### **Avg. Time to Close Over Last 12 Months**

Paloma	57 days
Palm Beach Gardens	66 days
Palm Beach	77 days