

# Unit 20 Royal Palm Way # 501 - Boca Bayou 1 to 22

20 Royal Palm Way # 501 - 1 Royal Palm Wy, Boca Raton, FL, Palm Beach 33432

## Unit Information

MLS Number:	F10531777
Status:	Active
Size:	1,130 Sq ft.
Bedrooms:	2
Full Bathrooms:	2
Half Bathrooms:	0
Parking Spaces:	1 Space,Assigned Parking,Guest Parking
View:	
List Price:	\$457,000
List PPSF:	\$404
Valuated Price:	\$431,000
Valuated PPSF:	\$381

*The above valuated price is a baseline figure that does not take into account any specific renovation, upgrade, split, merge, or deterioration of the unit.*

## Building Information

Number of units:	643
Number of active listings for rent:	0
Number of active listings for sale:	16
Building inventory for sale:	2%
Number of sales over the last 12 months:	31
Number of sales over the last 6 months:	21
Number of sales over the last 3 months:	9

## Building Association Information

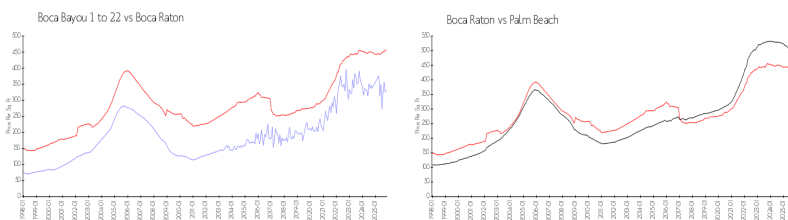
Boca Bayou Condominium Association, Inc.  
Address: 30 Royal Palm Way,  
Boca Raton, FL 33432  
Phone: (561) 392-5540  
Fax: (561) 750-3707

<https://>

## Recent Sales

Unit #	Size	Closing Date	Sale Price	PPSF
602	1,095 sq ft	Dec 2025	\$365,000	\$333
504	815 sq ft	Nov 2025	\$219,100	\$269
304	1,130 sq ft	Nov 2025	\$365,000	\$323
202	1,095 sq ft	Nov 2025	\$495,000	\$452
5050	1,095 sq ft	Oct 2025	\$358,000	\$327
2040	795 sq ft	Oct 2025	\$255,000	\$321

## Market Information

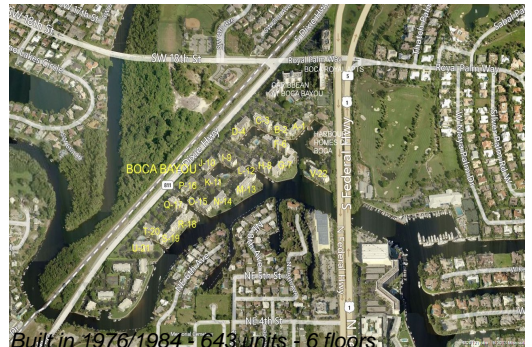


Boca Bayou 1 to 22: \$332/sq. ft.  
Boca Raton: \$457/sq. ft.

Boca Raton: \$457/sq. ft.  
Palm Beach: \$452/sq. ft.

## Inventory for Sale

Boca Bayou 1 to 22 2%



Boca Raton	3%
Palm Beach	3%

### **Avg. Time to Close Over Last 12 Months**

Boca Bayou 1 to 22	71 days
Boca Raton	80 days
Palm Beach	77 days