

# Unit 2700 N Federal Hwy # 407 - Peninsula on the Intracoastal

2700 N Federal Hwy # 407 - 2670-2700 N Federal Hwy, Boynton Beach, FL, Palm Beach 33435

## Unit Information

MLS Number:	F10537991
Status:	Active
Size:	1,742 Sq ft.
Bedrooms:	2
Full Bathrooms:	2
Half Bathrooms:	0
Parking Spaces:	1 Space,Guest Parking
View:	
List Price:	\$1,200,000
List PPSF:	\$689
Valuated Price:	\$994,000
Valuated PPSF:	\$698

*The above valuated price is a baseline figure that does not take into account any specific renovation, upgrade, split, merge, or deterioration of the unit.*

## Building Information

Number of units:	70
Number of active listings for rent:	0
Number of active listings for sale:	2
Building inventory for sale:	2%
Number of sales over the last 12 months:	4
Number of sales over the last 6 months:	1
Number of sales over the last 3 months:	0

## Building Association Information

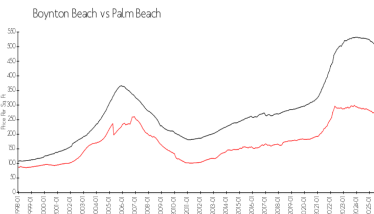
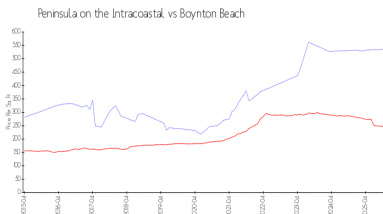
Peninsula on the Intracoastal  
561-740-3400

<https://peninsulaboynton.com/>

## Recent Sales

Unit #	Size	Closing Date	Sale Price	PPSF
32	1,822 sq ft	Aug 2025	\$563,000	\$309
PH 507	1,742 sq ft	Mar 2025	\$725,000	\$416
406	1,844 sq ft	Mar 2025	\$820,000	\$445
204	1,487 sq ft	Feb 2025	\$702,500	\$472

## Market Information

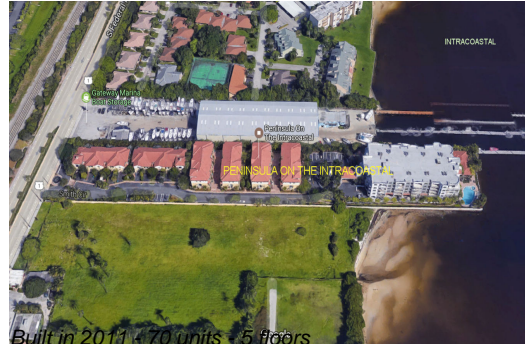


Peninsula on the Intracoastal: \$535/sq. ft.  
Boynton Beach: \$250/sq. ft.

Boynton Beach: \$250/sq. ft.  
Palm Beach: \$452/sq. ft.

## Inventory for Sale

Peninsula on the Intracoastal	3%
Boynton Beach	2%
Palm Beach	3%



### **Avg. Time to Close Over Last 12 Months**

Peninsula on the Intracoastal	50 days
Boynton Beach	64 days
Palm Beach	77 days