

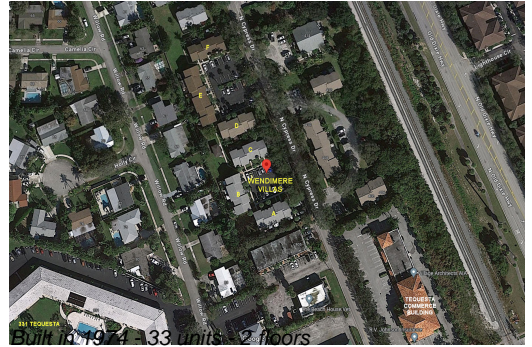
Unit 413 N Cypress Dr # 4D - Wendimere Villas

413 N Cypress Dr # 4D - 407 N Cypress Dr, Jupiter, FL, Palm Beach 33469

Unit Information

MLS Number:	R11150065
Status:	Active
Size:	1,024 Sq ft.
Bedrooms:	2
Full Bathrooms:	1
Half Bathrooms:	1
Parking Spaces:	Assigned
View:	
Rental Price:	\$2,800
List PPSF:	\$3
Valuated Price:	\$288,000
Valuated PPSF:	\$281

The above valuated price is a baseline figure that does not take into account any specific renovation, upgrade, split, merge, or deterioration of the unit.



Building Information

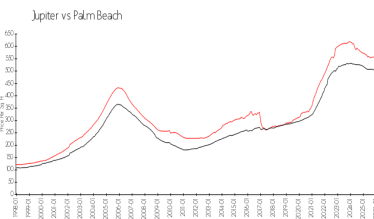
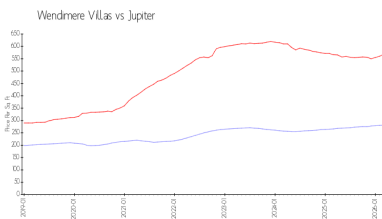
Number of units:	33
Number of active listings for rent:	0
Number of active listings for sale:	2
Building inventory for sale:	6%
Number of sales over the last 12 months:	3
Number of sales over the last 6 months:	3
Number of sales over the last 3 months:	1

Building Association Information

Windemere Owners Association
 FirstService Residential
 2950 North 28th Terrace
 Hollywood, Florida 33020

<https://www.fsresidential.com/florida/news-events/press-releases/firstservice-re>

Market Information



Wendimere Villas:	\$281/sq. ft.	Jupiter:	\$568/sq. ft.
Jupiter:	\$568/sq. ft.	Palm Beach:	\$454/sq. ft.

Inventory for Sale

Wendimere Villas	6%
Jupiter	7%
Palm Beach	6%

Avg. Time to Close Over Last 12 Months

Wendimere Villas	39 days
Jupiter	84 days
Palm Beach	78 days