

Unit 808 - Mayan Towers North

808 - 145 S Ocean Ave, Palm Beach Shores, FL, Palm Beach 33404

Unit Information

| | |
|-----------------|--------------------|
| MLS Number: | RX-10810749 |
| Status: | Closed |
| Size: | 1,047 Sq ft. |
| Bedrooms: | 2 |
| Full Bathrooms: | 2 |
| Half Bathrooms: | 0 |
| Parking Spaces: | Assigned |
| View: | Intracoastal,Ocean |
| Rental Price: | \$5,500 |
| List PPSF: | \$5 |
| Valuated Price: | \$466,000 |
| Valuated PPSF: | \$445 |

The above valuated price is a baseline figure that does not take into account any specific renovation, upgrade, split, merge, or deterioration of the unit.

Building Information

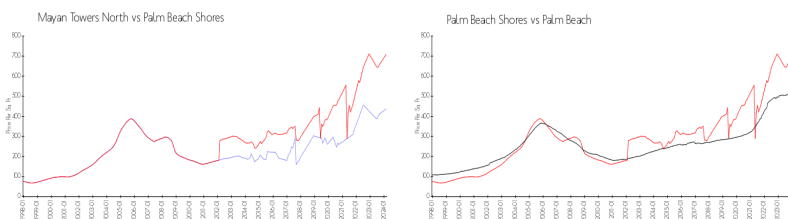
| | |
|--|-----|
| Number of units: | 140 |
| Number of active listings for rent: | 0 |
| Number of active listings for sale: | 1 |
| Building inventory for sale: | 0% |
| Number of sales over the last 12 months: | 3 |
| Number of sales over the last 6 months: | 0 |
| Number of sales over the last 3 months: | 0 |

Building Association Information

Mayan Towers North
CONTACT INFO
145 S. Ocean Avenue
Palm Beach Shores, FL 33404
Email: MayanTowersNorth@bellsouth.net
Office Phone: 561.848.2306
Office Fax: 561.848.2729

<http://mayantowersnorth.com/condo/>

Market Information



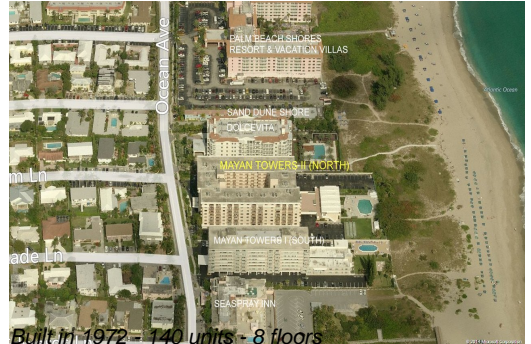
| | |
|-----------------------------------|----------------------------------|
| Mayan Towers North: \$421/sq. ft. | Palm Beach Shores: \$710/sq. ft. |
| Palm Beach Shores: \$710/sq. ft. | Palm Beach: \$454/sq. ft. |

Inventory for Sale

| | |
|--------------------|----|
| Mayan Towers North | 1% |
| Palm Beach Shores | 2% |
| Palm Beach | 3% |

Avg. Time to Close Over Last 12 Months

| | |
|--------------------|----------|
| Mayan Towers North | 161 days |
| Palm Beach Shores | 98 days |



Palm Beach

56 days