

Unit 9102 - Lavers Delray Racquet Club I to IX

9102 - 950 Egret Cir, Delray Beach, FL, Palm Beach 33444

Unit Information

MLS Number:	RX-10867062
Status:	Pending
Size:	1,290 Sq ft.
Bedrooms:	2
Full Bathrooms:	2
Half Bathrooms:	0
Parking Spaces:	Assigned, Guest, Vehicle Restrictions
View:	Tennis
List Price:	\$338,000
List PPSF:	\$262
Valuated Price:	\$308,000
Valuated PPSF:	\$239

The above valuated price is a baseline figure that does not take into account any specific renovation, upgrade, split, merge, or deterioration of the unit.

Building Information

Number of units:	460
Number of active listings for rent:	16
Number of active listings for sale:	14
Building inventory for sale:	3%
Number of sales over the last 12 months:	22
Number of sales over the last 6 months:	9
Number of sales over the last 3 months:	6

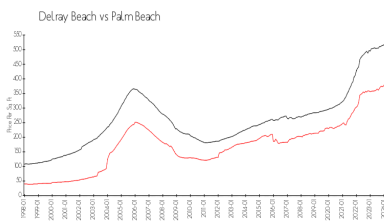
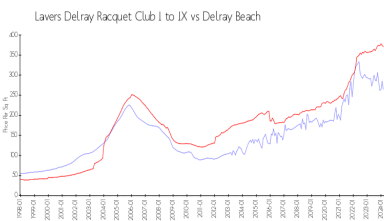
Building Association Information

Lavers Of Delray Racquet Club,
 Delray Racquet Club Association, Inc
 610 Egret Circle
 Delray Beach, FL 33444-7930
 (561) 276-3792

Recent Sales

Unit #	Size	Closing Date	Sale Price	PPSF
3208	1,290 sq ft	Apr 2024	\$385,000	\$298
9210	1,290 sq ft	Mar 2024	\$280,000	\$217
9105	1,175 sq ft	Mar 2024	\$305,000	\$260
5209	1,175 sq ft	Mar 2024	\$335,000	\$285
5511	758 sq ft	Feb 2024	\$208,000	\$274
3210	1,290 sq ft	Feb 2024	\$385,000	\$298

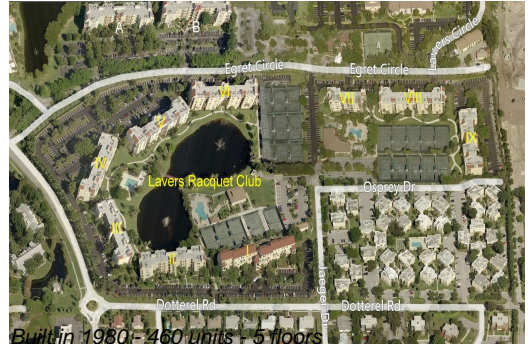
Market Information



Lavers Delray Racquet Club I to IX:	\$250/sq. ft.	Delray Beach:	\$227/sq. ft.
Delray Beach:	\$227/sq. ft.	Palm Beach:	\$453/sq. ft.

Inventory for Sale

Lavers Delray Racquet Club I to IX	3%
Delray Beach	2%



Palm Beach

3%

Avg. Time to Close Over Last 12 Months

Lavers Delray Racquet Club I to IX	83 days
Delray Beach	53 days
Palm Beach	56 days