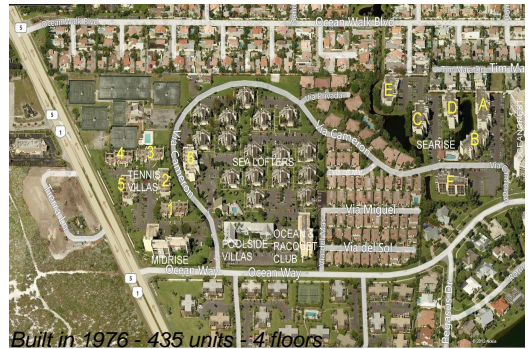


Unit 1-403 - Jupiter Ocean & Racquet Club

1-403 - 1605 S US Hwy 1, Jupiter, FL, Palm Beach 33477

Unit Information

MLS Number:	RX-10891504
Status:	Active
Size:	1,500 Sq ft.
Bedrooms:	2
Full Bathrooms:	2
Half Bathrooms:	0
Parking Spaces:	Assigned,Guest,Vehicle Restrictions
View:	Other
Rental Price:	\$3,500
List PPSF:	\$2
Valuated Price:	\$454,000
Valuated PPSF:	\$303



The above valuated price is a baseline figure that does not take into account any specific renovation, upgrade, split, merge, or deterioration of the unit.

Building Information

Number of units:	435
Number of active listings for rent:	0
Number of active listings for sale:	19
Building inventory for sale:	4%
Number of sales over the last 12 months:	23
Number of sales over the last 6 months:	12
Number of sales over the last 3 months:	6

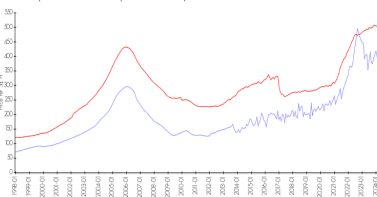
Building Association Information

Jupiter Ocean & Racquet Club Association Address: 1605 U.S. 1,
Jupiter, FL 33477
Phone:(561) 747-5331

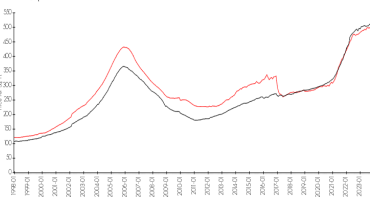
<http://jorcinc.net/site/>

Market Information

Jupiter Ocean & Racquet Club vs Jupiter



Jupiter vs Palm Beach



Jupiter Ocean & Racquet Club:	\$335/sq. ft.	Jupiter:	\$492/sq. ft.
Jupiter:	\$492/sq. ft.	Palm Beach:	\$454/sq. ft.

Inventory for Sale

Jupiter Ocean & Racquet Club	4%
Jupiter	3%
Palm Beach	3%

Avg. Time to Close Over Last 12 Months

Jupiter Ocean & Racquet Club	62 days
Jupiter	64 days
Palm Beach	56 days