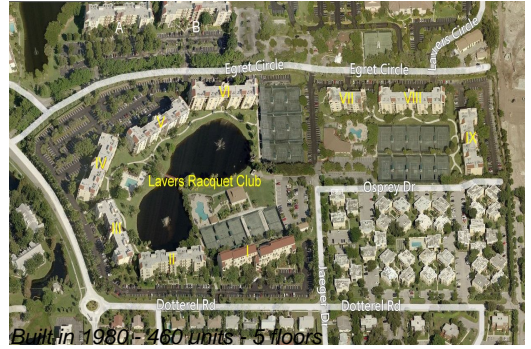


# Unit 1207 - Lavers Delray Racquet Club I to IX

1207 - 950 Egret Cir, Delray Beach, FL, Palm Beach 33444

## Unit Information

MLS Number: RX-10915917  
 Status: Active  
 Size: 758 Sq ft.  
 Bedrooms: 1  
 Full Bathrooms: 1  
 Half Bathrooms: 1  
 Parking Spaces: Assigned, Guest  
 View: Garden  
 Rental Price: \$2,000  
 List PPSF: \$3  
 Valuated Price: \$210,000  
 Valuated PPSF: \$277



*The above valuated price is a baseline figure that does not take into account any specific renovation, upgrade, split, merge, or deterioration of the unit.*

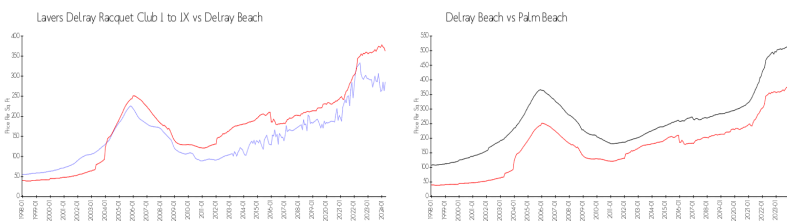
## Building Information

Number of units: 460  
 Number of active listings for rent: 16  
 Number of active listings for sale: 14  
 Building inventory for sale: 3%  
 Number of sales over the last 12 months: 21  
 Number of sales over the last 6 months: 9  
 Number of sales over the last 3 months: 6

## Building Association Information

Lavers Of Delray Racquet Club,  
 Delray Racquet Club Association, Inc  
 610 Egret Circle  
 Delray Beach, FL 33444-7930  
 (561) 276-3792

## Market Information



Lavers Delray Racquet Club I to IX:	\$286/sq. ft.	Delray Beach:	\$362/sq. ft.
Delray Beach:	\$362/sq. ft.	Palm Beach:	\$468/sq. ft.

## Inventory for Sale

Lavers Delray Racquet Club I to IX: 3%  
 Delray Beach: 2%  
 Palm Beach: 3%

## Avg. Time to Close Over Last 12 Months

Lavers Delray Racquet Club I to IX: 87 days  
 Delray Beach: 54 days  
 Palm Beach: 56 days