

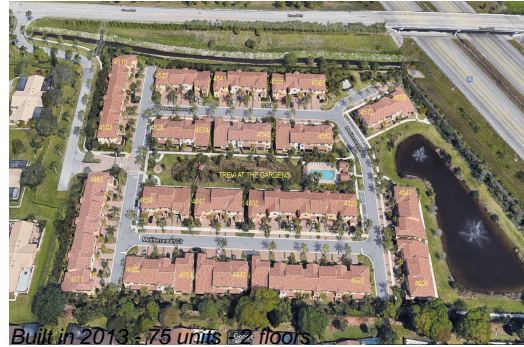
Unit 4627 Mediterranean Cir - Trevi at the Gardens

4627 Mediterranean Cir - 4503-4683 Mediterranean Cir, Palm Beach Gardens, FL, Palm Beach 33418

Unit Information

MLS Number: RX-10916198
 Status: Active
 Size: 2,387 Sq ft.
 Bedrooms: 3
 Full Bathrooms: 2
 Half Bathrooms: 1
 Parking Spaces: Driveway, Garage - Attached
 View: Pool
 List Price: \$574,930
 List PPSF: \$241
 Valuated Price: \$554,000
 Valuated PPSF: \$322

The above valuated price is a baseline figure that does not take into account any specific renovation, upgrade, split, merge, or deterioration of the unit.



Building Information

Number of units: 75
 Number of active listings for rent: 0
 Number of active listings for sale: 5
 Building inventory for sale: 6%
 Number of sales over the last 12 months: 2
 Number of sales over the last 6 months: 0
 Number of sales over the last 3 months: 0

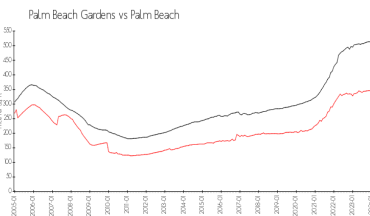
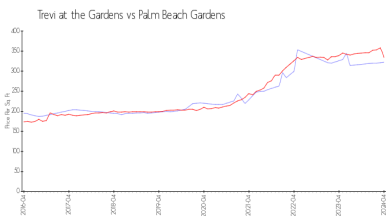
Building Association Information

Trevi at the Gardens HOA
 Address 4580 Mediterranean Cir
 Palm Beach Gardens, FL33418
 Phone +1 561-249-0489

Recent Sales

Unit #	Size	Closing Date	Sale Price	PPSF
	2,387 sq ft	Jul 2023	\$540,000	\$226
	2,251 sq ft	Jun 2023	\$560,000	\$249

Market Information



Trevi at the Gardens: \$322/sq. ft. Palm Beach \$334/sq. ft.
 Palm Beach \$334/sq. ft. Palm Beach Gardens:
 Gardens: Palm Beach: \$467/sq. ft.

Inventory for Sale

Trevi at the Gardens 7%
 Palm Beach Gardens 2%
 Palm Beach 3%

Avg. Time to Close Over Last 12 Months

Trevi at the Gardens	51 days
Palm Beach Gardens	47 days
Palm Beach	56 days