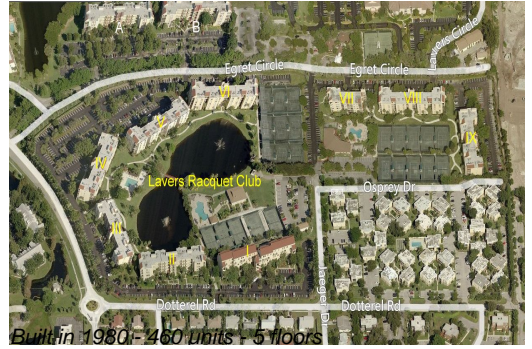


# Unit 7401 - Lavers Delray Racquet Club I to IX

7401 - 950 Egret Cir, Delray Beach, FL, Palm Beach 33444

## Unit Information

MLS Number:	RX-10917682
Status:	Active
Size:	1,175 Sq ft.
Bedrooms:	2
Full Bathrooms:	2
Half Bathrooms:	0
Parking Spaces:	Assigned,Guest,Vehicle Restrictions
View:	Pool,Tennis
Rental Price:	\$3,000
List PPSF:	\$3
Valuated Price:	\$331,000
Valuated PPSF:	\$282



*The above valuated price is a baseline figure that does not take into account any specific renovation, upgrade, split, merge, or deterioration of the unit.*

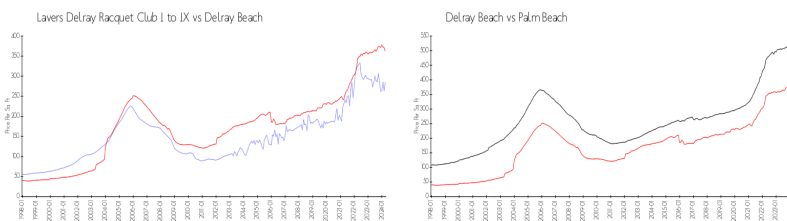
## Building Information

Number of units:	460
Number of active listings for rent:	16
Number of active listings for sale:	14
Building inventory for sale:	3%
Number of sales over the last 12 months:	21
Number of sales over the last 6 months:	9
Number of sales over the last 3 months:	6

## Building Association Information

Lavers Of Delray Racquet Club,  
 Delray Racquet Club Association, Inc  
 610 Egret Circle  
 Delray Beach, FL 33444-7930  
 (561) 276-3792

## Market Information



Lavers Delray Racquet Club I to IX:	\$286/sq. ft.	Delray Beach:	\$362/sq. ft.
Delray Beach:	\$362/sq. ft.	Palm Beach:	\$467/sq. ft.

## Inventory for Sale

Lavers Delray Racquet Club I to IX	3%
Delray Beach	2%
Palm Beach	3%

## Avg. Time to Close Over Last 12 Months

Lavers Delray Racquet Club I to IX	87 days
Delray Beach	54 days
Palm Beach	56 days