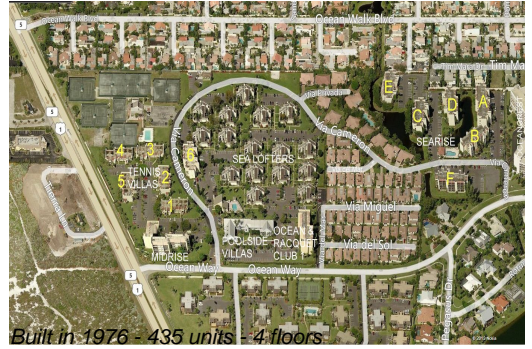


# Unit Sea Lofters E-15 - Jupiter Ocean & Racquet Club

Sea Lofters E-15 - 1605 S US Hwy 1, Jupiter, FL, Palm Beach 33477

## Unit Information

MLS Number:	RX-10922434
Status:	Active
Size:	1,160 Sq ft.
Bedrooms:	2
Full Bathrooms:	2
Half Bathrooms:	0
Parking Spaces:	Assigned
View:	Garden
Rental Price:	\$6,500
List PPSF:	\$6
Valuated Price:	\$434,000
Valuated PPSF:	\$374



The above valuated price is a baseline figure that does not take into account any specific renovation, upgrade, split, merge, or deterioration of the unit.

## Building Information

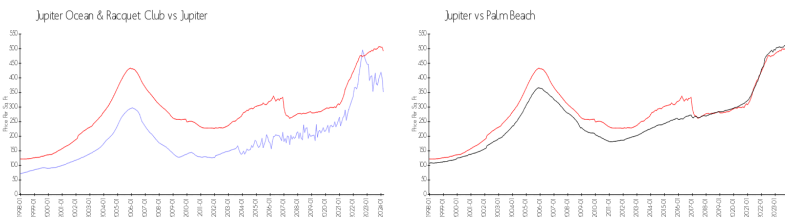
Number of units:	435
Number of active listings for rent:	0
Number of active listings for sale:	19
Building inventory for sale:	4%
Number of sales over the last 12 months:	23
Number of sales over the last 6 months:	12
Number of sales over the last 3 months:	6

## Building Association Information

Jupiter Ocean & Racquet Club Association Address: 1605 U.S. 1,  
Jupiter, FL 33477  
Phone: (561) 747-5331

<http://jorcinc.net/site/>

## Market Information



Jupiter Ocean & Racquet Club:	\$335/sq. ft.	Jupiter:	\$492/sq. ft.
Jupiter:	\$492/sq. ft.	Palm Beach:	\$454/sq. ft.

## Inventory for Sale

Jupiter Ocean & Racquet Club	4%
Jupiter	3%
Palm Beach	3%

## Avg. Time to Close Over Last 12 Months

Jupiter Ocean & Racquet Club	64 days
Jupiter	64 days
Palm Beach	56 days