

Unit 511 - Slade

511 - 1551 N Flagler Dr, West Palm Beach, FL, Palm Beach 33401

Unit Information

MLS Number:	RX-10937397
Status:	Active
Size:	1,625 Sq ft.
Bedrooms:	3
Full Bathrooms:	2
Half Bathrooms:	0
Parking Spaces:	Assigned,Covered,Guest
View:	Intracoastal,Pool
List Price:	\$1,800,000
List PPSF:	\$1,108
Valuated Price:	\$735,000
Valuated PPSF:	\$452

The above valuated price is a baseline figure that does not take into account any specific renovation, upgrade, split, merge, or deterioration of the unit.

Building Information

Number of units:	199
Number of active listings for rent:	10
Number of active listings for sale:	15
Building inventory for sale:	7%
Number of sales over the last 12 months:	11
Number of sales over the last 6 months:	9
Number of sales over the last 3 months:	6

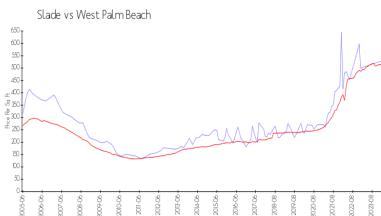
Building Association Information

The Slade Condo Association
561-653-8230

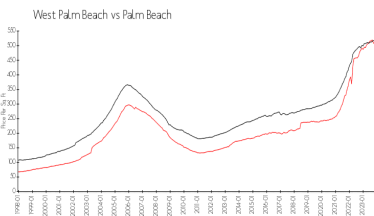
Recent Sales

Unit #	Size	Closing Date	Sale Price	PPSF
Ph 9	760 sq ft	May 2024	\$300,000	\$395
818	1,400 sq ft	Apr 2024	\$850,000	\$607
1405	1,175 sq ft	Apr 2024	\$555,000	\$472
802	1,175 sq ft	Apr 2024	\$550,000	\$468
602	1,175 sq ft	Mar 2024	\$550,000	\$468

Market Information



Slade: \$496/sq. ft.
West Palm Beach: \$511/sq. ft.

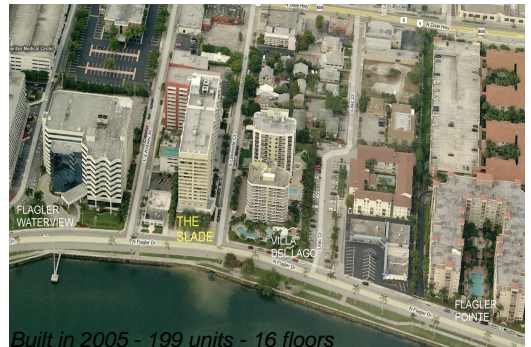


West Palm Beach: \$511/sq. ft.
Palm Beach: \$475/sq. ft.

Inventory for Sale

Slade	8%
West Palm Beach	4%
Palm Beach	3%

Avg. Time to Close Over Last 12 Months



Slade
West Palm Beach
Palm Beach

72 days
52 days
56 days