

# Unit Sea Rise D-402 - Jupiter Ocean & Racquet Club

Sea Rise D-402 - 1605 S US Hwy 1, Jupiter, FL, Palm Beach 33477

## Unit Information

MLS Number:	RX-10939139
Status:	Active
Size:	860 Sq ft.
Bedrooms:	1
Full Bathrooms:	1
Half Bathrooms:	1
Parking Spaces:	Assigned, Guest
View:	Lake
List Price:	\$479,000
List PPSF:	\$557
Valuated Price:	\$379,000
Valuated PPSF:	\$441

The above valuated price is a baseline figure that does not take into account any specific renovation, upgrade, split, merge, or deterioration of the unit.

## Building Information

Number of units:	435
Number of active listings for rent:	0
Number of active listings for sale:	19
Building inventory for sale:	4%
Number of sales over the last 12 months:	23
Number of sales over the last 6 months:	11
Number of sales over the last 3 months:	6

## Building Association Information

Jupiter Ocean & Racquet Club Association Address: 1605 U.S. 1,  
Jupiter, FL 33477  
Phone: (561) 747-5331

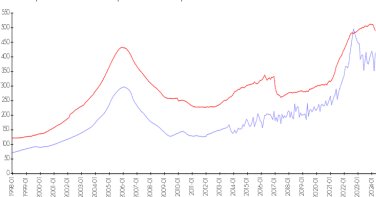
<http://jorcinc.net/site/>

## Recent Sales

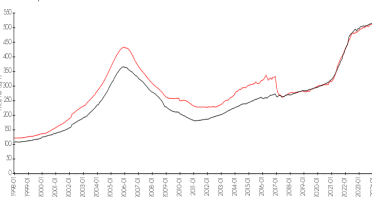
Unit #	Size	Closing Date	Sale Price	PPSF
3G	1,160 sq ft	Apr 2024	\$470,000	\$405
3h	1,160 sq ft	Apr 2024	\$600,000	\$517
V-6 206	1,200 sq ft	Mar 2024	\$350,000	\$292
A106	860 sq ft	Mar 2024	\$335,000	\$390
V4-106	965 sq ft	Feb 2024	\$320,000	\$332
A302	860 sq ft	Feb 2024	\$370,000	\$430

## Market Information

Jupiter Ocean & Racquet Club vs Jupiter

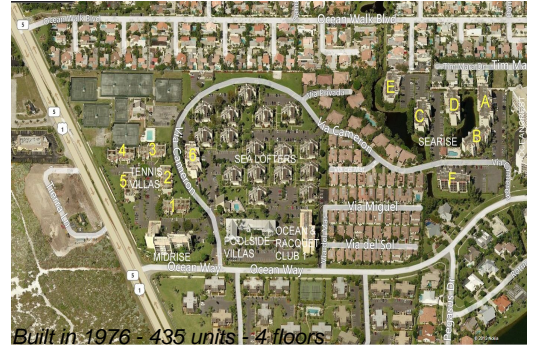


Jupiter vs Palm Beach



Jupiter Ocean & Racquet Club:	\$413/sq. ft.	Jupiter:	\$489/sq. ft.
Jupiter:	\$489/sq. ft.	Palm Beach:	\$467/sq. ft.

## Inventory for Sale



Jupiter Ocean & Racquet Club	4%
Jupiter	3%
Palm Beach	3%

**Avg. Time to Close Over Last 12 Months**

Jupiter Ocean & Racquet Club	63 days
Jupiter	65 days
Palm Beach	56 days