

# Unit 1404 - Placido Mar

1404 - 5200 N Flagler Dr, West Palm Beach, FL, Palm Beach 33407

## Unit Information

MLS Number: RX-10941516  
 Status: Active  
 Size: 1,250 Sq ft.  
 Bedrooms: 2  
 Full Bathrooms: 2  
 Half Bathrooms: 0  
 Parking Spaces: Assigned, Guest  
 View: Intracoastal, Ocean  
 List Price: \$579,000  
 List PPSF: \$463  
 Valuated Price: \$480,000  
 Valuated PPSF: \$384

*The above valuated price is a baseline figure that does not take into account any specific renovation, upgrade, split, merge, or deterioration of the unit.*

## Building Information

Number of units: 144  
 Number of active listings for rent: 0  
 Number of active listings for sale: 7  
 Building inventory for sale: 4%  
 Number of sales over the last 12 months: 1  
 Number of sales over the last 6 months: 0  
 Number of sales over the last 3 months: 0

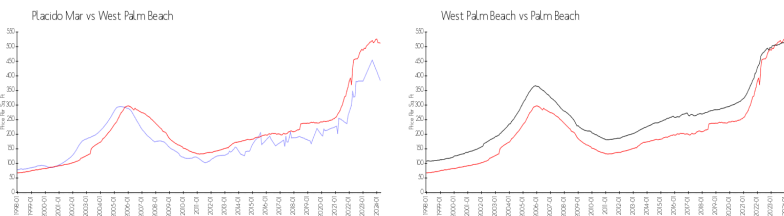
## Building Association Information

Placido Mar Association, Inc  
 5200 N Flagler Drive # 1505  
 West Palm Beach, FL33407-2755  
 (561) 842-3233

## Recent Sales

Unit #	Size	Closing Date	Sale Price	PPSF
704	1,250 sq ft	Sep 2023	\$529,000	\$423

## Market Information



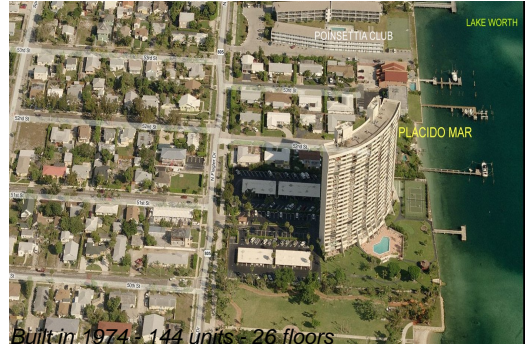
Placido Mar:	\$384/sq. ft.	West Palm Beach:	\$512/sq. ft.
West Palm Beach:	\$512/sq. ft.	Palm Beach:	\$467/sq. ft.

## Inventory for Sale

Placido Mar	5%
West Palm Beach	3%
Palm Beach	3%

## Avg. Time to Close Over Last 12 Months

Placido Mar	92 days
West Palm Beach	51 days



Palm Beach

56 days