

Unit 411 N Cypress Dr # 15C - Wendimere Villas

411 N Cypress Dr # 15C - 407 N Cypress Dr, Jupiter, FL, Palm Beach 33469

Unit Information

MLS Number:	RX-10943799
Status:	Active
Size:	1,024 Sq ft.
Bedrooms:	2
Full Bathrooms:	1
Half Bathrooms:	1
Parking Spaces:	Assigned, Guest
View:	Other
List Price:	\$283,000
List PPSF:	\$276
Valuated Price:	\$291,000
Valuated PPSF:	\$284

The above valuated price is a baseline figure that does not take into account any specific renovation, upgrade, split, merge, or deterioration of the unit.

Building Information

Number of units:	33
Number of active listings for rent:	0
Number of active listings for sale:	1
Building inventory for sale:	3%
Number of sales over the last 12 months:	1
Number of sales over the last 6 months:	0
Number of sales over the last 3 months:	0

Building Association Information

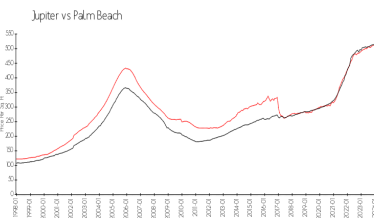
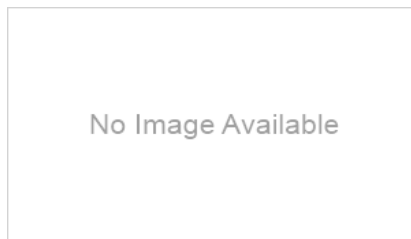
Windemere Owners Association
 FirstService Residential
 2950 North 28th Terrace
 Hollywood, Florida 33020

<https://www.fsresidential.com/florida/news-events/press-releases/firstservice-re>

Recent Sales

Unit #	Size	Closing Date	Sale Price	PPSF
3	1,024 sq ft	Jul 2023	\$277,500	\$271

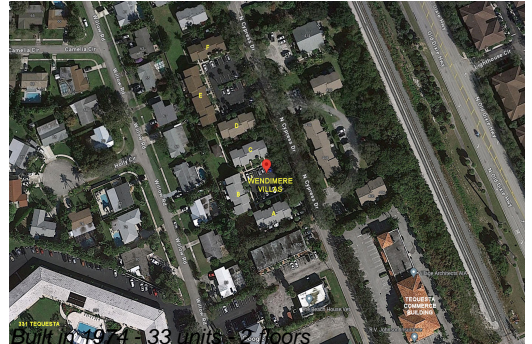
Market Information



Wendimere Villas:	\$284/sq. ft.	Jupiter:	\$489/sq. ft.
Jupiter:	\$489/sq. ft.	Palm Beach:	\$467/sq. ft.

Inventory for Sale

Wendimere Villas	3%
Jupiter	3%
Palm Beach	3%



Avg. Time to Close Over Last 12 Months

Wendimere Villas	n/a
Jupiter	65 days
Palm Beach	56 days