

Unit 205B - Ocean Parks (A to O)

205B - 300 N Highway A1A, Jupiter, FL, Palm Beach 33477

Unit Information

MLS Number:	RX-10954364
Status:	Active
Size:	1,240 Sq ft.
Bedrooms:	2
Full Bathrooms:	2
Half Bathrooms:	0
Parking Spaces:	Assigned, Guest, Open
View:	Garden, Pond
List Price:	\$595,000
List PPSF:	\$480
Valuated Price:	\$322,000
Valuated PPSF:	\$260

The above valuated price is a baseline figure that does not take into account any specific renovation, upgrade, split, merge, or deterioration of the unit.

Building Information

Number of units:	328
Number of active listings for rent:	0
Number of active listings for sale:	16
Building inventory for sale:	4%
Number of sales over the last 12 months:	10
Number of sales over the last 6 months:	6
Number of sales over the last 3 months:	2

Building Association Information

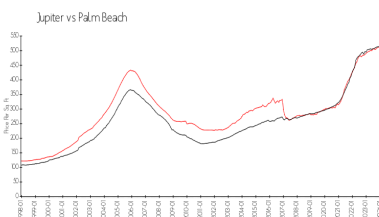
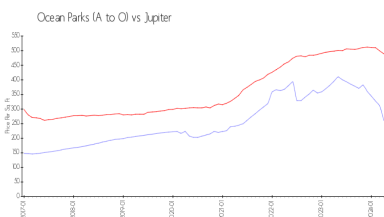
Ocean Parks Office
 300 N. Ocean Blvd (Hwy. A1A)
 Jupiter, FL 33477-9510
 (561) 744-0668
 (561) 575-2874 (fax)

<https://www.oceanparks.com/>

Recent Sales

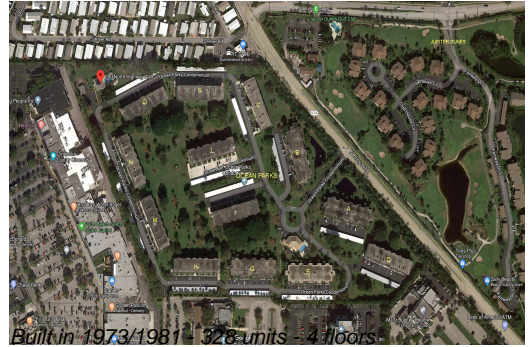
Unit #	Size	Closing Date	Sale Price	PPSF
103o	1,520 sq ft	Apr 2024	\$350,000	\$230
304f	1,520 sq ft	Mar 2024	\$475,000	\$313
102n	1,520 sq ft	Jan 2024	\$635,000	\$418
106n	1,936 sq ft	Dec 2023	\$795,500	\$411
105g	1,807 sq ft	Nov 2023	\$730,000	\$404
103m	1,520 sq ft	Nov 2023	\$530,000	\$349

Market Information



Ocean Parks (A to O):	\$261/sq. ft.	Jupiter:	\$489/sq. ft.
Jupiter:	\$489/sq. ft.	Palm Beach:	\$467/sq. ft.

Inventory for Sale



Ocean Parks (A to O)	5%
Jupiter	3%
Palm Beach	3%

Avg. Time to Close Over Last 12 Months

Ocean Parks (A to O)	73 days
Jupiter	65 days
Palm Beach	56 days