

Unit 1906 Mainsail Cir - Sea Colony

1906 Mainsail Cir - 101-1909 Mainsail Cir, Jupiter, FL, Palm Beach 33477

Unit Information

MLS Number:	RX-10954632
Status:	Active
Size:	1,624 Sq ft.
Bedrooms:	3
Full Bathrooms:	2
Half Bathrooms:	0
Parking Spaces:	Driveway,Garage - Attached,Guest,Vehicle Restrictions
View:	Tennis
Rental Price:	\$7,000
List PPSF:	\$4
Valuated Price:	\$718,000
Valuated PPSF:	\$442

The above valuated price is a baseline figure that does not take into account any specific renovation, upgrade, split, merge, or deterioration of the unit.

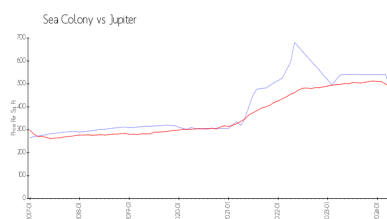
Building Information

Number of units:	171
Number of active listings for rent:	0
Number of active listings for sale:	3
Building inventory for sale:	1%
Number of sales over the last 12 months:	5
Number of sales over the last 6 months:	4
Number of sales over the last 3 months:	3

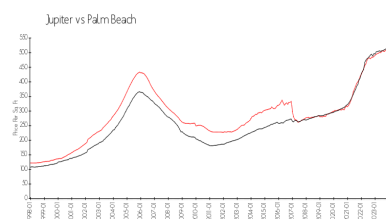
Building Association Information

Sea Colony Community Association
Address: 1910 Mainsail Cir,
Jupiter, FL 33477
Phone: +1 561-743-5411

Market Information



Sea Colony: \$465/sq. ft.
Jupiter: \$489/sq. ft.



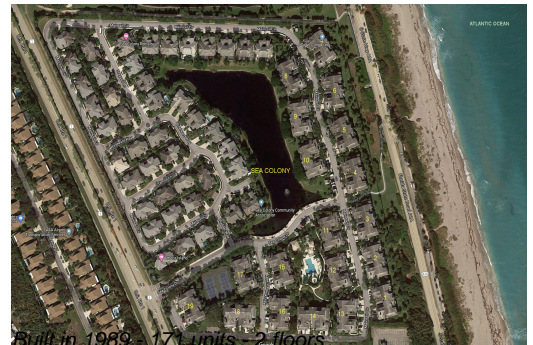
Jupiter: \$489/sq. ft.
Palm Beach: \$468/sq. ft.

Inventory for Sale

Sea Colony	2%
Jupiter	3%
Palm Beach	3%

Avg. Time to Close Over Last 12 Months

Sea Colony	65 days
Jupiter	66 days
Palm Beach	56 days



Built in 1989 - 171 units - 2 floors