

Unit Sea Rise A-308 - Jupiter Ocean & Racquet Club

Sea Rise A-308 - 1605 S US Hwy 1, Jupiter, FL, Palm Beach 33477

Unit Information

| | |
|-----------------|-----------------|
| MLS Number: | RX-10955740 |
| Status: | Active |
| Size: | 1,183 Sq ft. |
| Bedrooms: | 2 |
| Full Bathrooms: | 2 |
| Half Bathrooms: | 0 |
| Parking Spaces: | Assigned, Guest |
| View: | Lake |
| List Price: | \$600,000 |
| List PPSF: | \$507 |
| Valuated Price: | \$517,000 |
| Valuated PPSF: | \$437 |

The above valuated price is a baseline figure that does not take into account any specific renovation, upgrade, split, merge, or deterioration of the unit.

Building Information

| | |
|--|-----|
| Number of units: | 435 |
| Number of active listings for rent: | 0 |
| Number of active listings for sale: | 19 |
| Building inventory for sale: | 4% |
| Number of sales over the last 12 months: | 23 |
| Number of sales over the last 6 months: | 11 |
| Number of sales over the last 3 months: | 6 |

Building Association Information

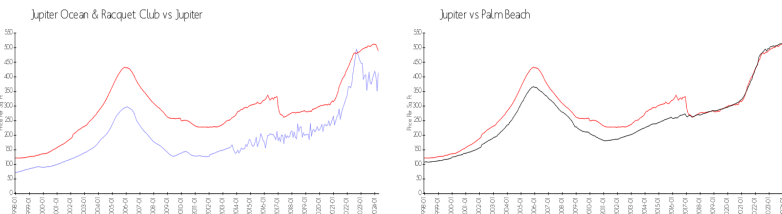
Jupiter Ocean & Racquet Club Association
 Address: 1605 U.S. 1,
 Jupiter, FL 33477
 Phone: (561) 747-5331

<http://jorcinc.net/site/>

Recent Sales

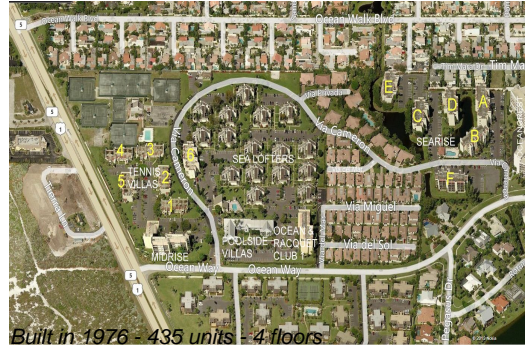
| Unit # | Size | Closing Date | Sale Price | PPSF |
|---------|-------------|--------------|------------|-------|
| 3G | 1,160 sq ft | Apr 2024 | \$470,000 | \$405 |
| 3h | 1,160 sq ft | Apr 2024 | \$600,000 | \$517 |
| V-6 206 | 1,200 sq ft | Mar 2024 | \$350,000 | \$292 |
| A106 | 860 sq ft | Mar 2024 | \$335,000 | \$390 |
| V4-106 | 965 sq ft | Feb 2024 | \$320,000 | \$332 |
| A302 | 860 sq ft | Feb 2024 | \$370,000 | \$430 |

Market Information



| | | | |
|-------------------------------|---------------|-------------|---------------|
| Jupiter Ocean & Racquet Club: | \$413/sq. ft. | Jupiter: | \$489/sq. ft. |
| Jupiter: | \$489/sq. ft. | Palm Beach: | \$467/sq. ft. |

Inventory for Sale



| | |
|------------------------------|----|
| Jupiter Ocean & Racquet Club | 4% |
| Jupiter | 3% |
| Palm Beach | 3% |

Avg. Time to Close Over Last 12 Months

| | |
|------------------------------|---------|
| Jupiter Ocean & Racquet Club | 63 days |
| Jupiter | 65 days |
| Palm Beach | 56 days |