

# Unit 202 Mainsail Cir - Sea Colony

202 Mainsail Cir - 101-1909 Mainsail Cir, Jupiter, FL, Palm Beach 33477

## Unit Information

MLS Number:	RX-10961396
Status:	Active
Size:	1,620 Sq ft.
Bedrooms:	2
Full Bathrooms:	2
Half Bathrooms:	0
Parking Spaces:	Driveway,Garage - Attached,Vehicle Restrictions
View:	Garden
Rental Price:	\$9,000
List PPSF:	\$6
Valuated Price:	\$816,000
Valuated PPSF:	\$504

*The above valuated price is a baseline figure that does not take into account any specific renovation, upgrade, split, merge, or deterioration of the unit.*

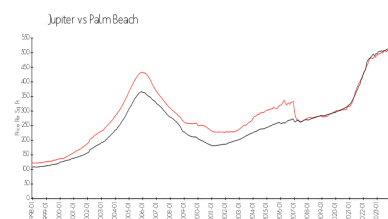
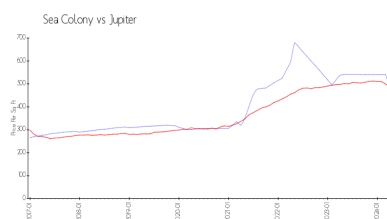
## Building Information

Number of units:	171
Number of active listings for rent:	0
Number of active listings for sale:	3
Building inventory for sale:	1%
Number of sales over the last 12 months:	5
Number of sales over the last 6 months:	4
Number of sales over the last 3 months:	3

## Building Association Information

Sea Colony Community Association  
Address: 1910 Mainsail Cir,  
Jupiter, FL 33477  
Phone: +1 561-743-5411

## Market Information



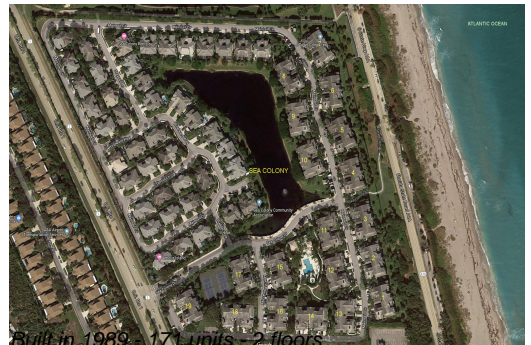
Sea Colony:	\$465/sq. ft.	Jupiter:	\$489/sq. ft.
Jupiter:	\$489/sq. ft.	Palm Beach:	\$468/sq. ft.

## Inventory for Sale

Sea Colony	2%
Jupiter	3%
Palm Beach	3%

## Avg. Time to Close Over Last 12 Months

Sea Colony	65 days
Jupiter	66 days
Palm Beach	56 days



Built in 1989 - 171 units - 2 floors