

Unit 3902 Fairway Dr N - Estuary at Jupiter Dunes

3902 Fairway Dr N - 2401-4508 Fairway Dr N, Jupiter, FL, Palm Beach 33477

Unit Information

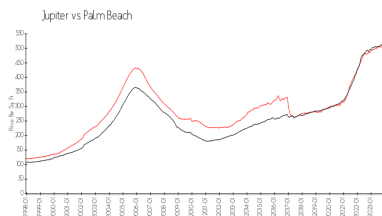
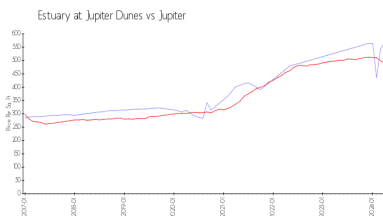
MLS Number:	RX-10964875
Status:	Active
Size:	1,346 Sq ft.
Bedrooms:	2
Full Bathrooms:	2
Half Bathrooms:	1
Parking Spaces:	Garage - Attached
View:	Garden,Golf
Rental Price:	\$7,000
List PPSF:	\$5
Valuated Price:	\$769,000
Valuated PPSF:	\$571

The above valuated price is a baseline figure that does not take into account any specific renovation, upgrade, split, merge, or deterioration of the unit.

Building Information

Number of units:	154
Number of active listings for rent:	0
Number of active listings for sale:	2
Building inventory for sale:	1%
Number of sales over the last 12 months:	9
Number of sales over the last 6 months:	9
Number of sales over the last 3 months:	7

Market Information



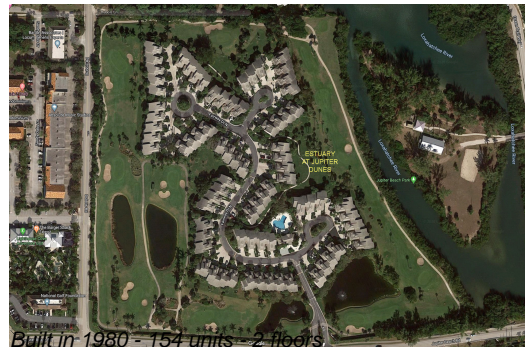
Estuary at Jupiter	\$569/sq. ft.	Jupiter:	\$489/sq. ft.
Dunes:			
Jupiter:	\$489/sq. ft.	Palm Beach:	\$469/sq. ft.

Inventory for Sale

Estuary at Jupiter Dunes	1%
Jupiter	3%
Palm Beach	3%

Avg. Time to Close Over Last 12 Months

Estuary at Jupiter Dunes	29 days
Jupiter	66 days
Palm Beach	56 days



Built in 1980 - 154 units - 2 floors