

Unit 811 - Slade

811 - 1551 N Flagler Dr, West Palm Beach, FL, Palm Beach 33401

Unit Information

MLS Number:	RX-10967910
Status:	Active
Size:	1,716 Sq ft.
Bedrooms:	3
Full Bathrooms:	2
Half Bathrooms:	0
Parking Spaces:	2+ Spaces,Assigned,Garage - Building
View:	Intracoastal,Lake,Ocean
List Price:	\$950,000
List PPSF:	\$554
Valuated Price:	\$758,000
Valuated PPSF:	\$466

The above valuated price is a baseline figure that does not take into account any specific renovation, upgrade, split, merge, or deterioration of the unit.

Building Information

Number of units:	199
Number of active listings for rent:	10
Number of active listings for sale:	18
Building inventory for sale:	9%
Number of sales over the last 12 months:	10
Number of sales over the last 6 months:	8
Number of sales over the last 3 months:	6

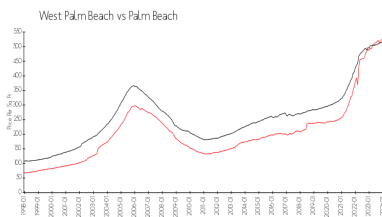
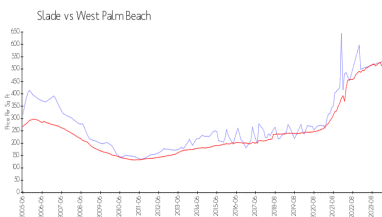
Building Association Information

The Slade Condo Association
561-653-8230

Recent Sales

Unit #	Size	Closing Date	Sale Price	PPSF
818	1,400 sq ft	Apr 2024	\$850,000	\$607
1405	1,175 sq ft	Apr 2024	\$555,000	\$472
802	1,175 sq ft	Apr 2024	\$550,000	\$468
602	1,175 sq ft	Mar 2024	\$550,000	\$468
1401	1,868 sq ft	Feb 2024	\$1,150,000	\$616
705	1,175 sq ft	Feb 2024	\$540,000	\$460

Market Information

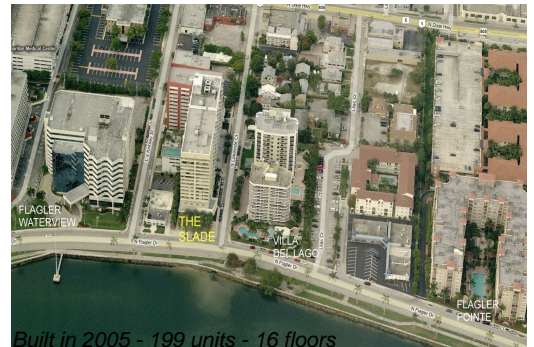


Slade:	\$496/sq. ft.	West Palm Beach:	\$512/sq. ft.
West Palm Beach:	\$512/sq. ft.	Palm Beach:	\$467/sq. ft.

Inventory for Sale

Slade	9%
West Palm Beach	3%
Palm Beach	3%

Avg. Time to Close Over Last 12 Months



Slade
West Palm Beach
Palm Beach

71 days
51 days
56 days