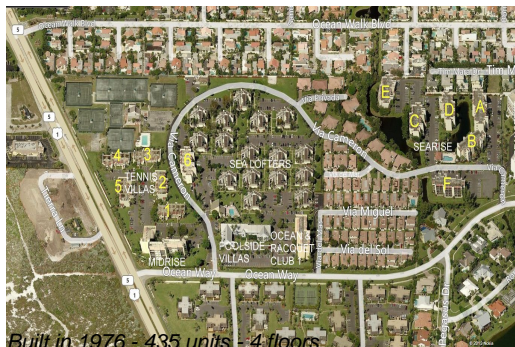


Unit Sea Lofters A-5 - Jupiter Ocean & Racquet Club

Sea Lofters A-5 - 1605 S US Hwy 1, Jupiter, FL, Palm Beach 33477

Unit Information

MLS Number:	RX-10969237
Status:	Active
Size:	740 Sq ft.
Bedrooms:	1
Full Bathrooms:	1
Half Bathrooms:	0
Parking Spaces:	Assigned
View:	Garden
Rental Price:	\$1,950
List PPSF:	\$3
Valuated Price:	\$341,000
Valuated PPSF:	\$461



The above valuated price is a baseline figure that does not take into account any specific renovation, upgrade, split, merge, or deterioration of the unit.

Building Information

Number of units:	435
Number of active listings for rent:	0
Number of active listings for sale:	19
Building inventory for sale:	4%
Number of sales over the last 12 months:	23
Number of sales over the last 6 months:	11
Number of sales over the last 3 months:	6

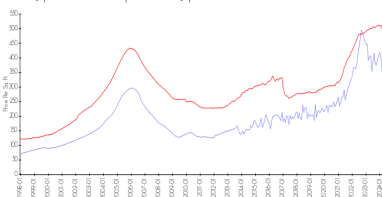
Building Association Information

Jupiter Ocean & Racquet Club Association Address: 1605 U.S. 1,
Jupiter, FL 33477
Phone: (561) 747-5331

<http://jorcinc.net/site/>

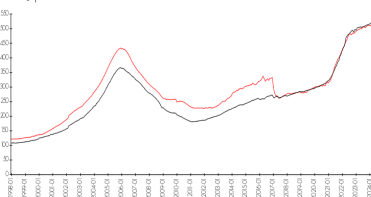
Market Information

Jupiter Ocean & Racquet Club vs Jupiter



Jupiter Ocean & Racquet Club: \$413/sq. ft.
Jupiter: \$489/sq. ft.

Jupiter vs Palm Beach



Jupiter: \$489/sq. ft.
Palm Beach: \$467/sq. ft.

Inventory for Sale

Jupiter Ocean & Racquet Club	4%
Jupiter	3%
Palm Beach	3%

Avg. Time to Close Over Last 12 Months

Jupiter Ocean & Racquet Club	63 days
Jupiter	65 days
Palm Beach	56 days