

# Unit 338 WATERSIDE DR - Waterside Village

338 WATERSIDE DR - 100-808 Waterside Dr, Hypoluxo, FL, Palm Beach 33462

## Unit Information

MLS Number:	RX-10969394
Status:	Active
Size:	1,259 Sq ft.
Bedrooms:	3
Full Bathrooms:	2
Half Bathrooms:	1
Parking Spaces:	Assigned
View:	Garden
Rental Price:	\$2,200
List PPSF:	\$2
Valuated Price:	\$327,000
Valuated PPSF:	\$260

The above valuated price is a baseline figure that does not take into account any specific renovation, upgrade, split, merge, or deterioration of the unit.

## Building Information

Number of units:	412
Number of active listings for rent:	3
Number of active listings for sale:	0
Building inventory for sale:	0%
Number of sales over the last 12 months:	5
Number of sales over the last 6 months:	1
Number of sales over the last 3 months:	1

## Building Association Information

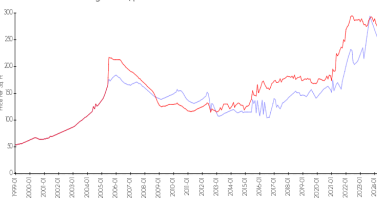
Waterside Village of Palm Beach

Condominium Association, Inc.  
 132 Waterside Drive  
 Hypoluxo, FL 33462-6160  
 Telephone (561) 582-6765  
 Fax (561) 582-5368  
 Property Manager & Staff:  
 watersidevillage@bellsouth.net

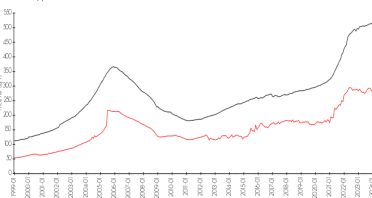
<http://www.watersidevillage.com/>

## Market Information

Waterside Village vs Hypoluxo



Hypoluxo vs Palm Beach



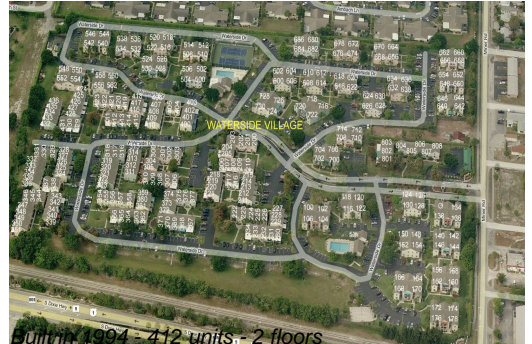
Waterside Village: \$256/sq. ft.  
 Hypoluxo: \$281/sq. ft.

Hypoluxo: \$281/sq. ft.  
 Palm Beach: \$467/sq. ft.

## Inventory for Sale

Waterside Village	0%
Hypoluxo	2%
Palm Beach	3%

## Avg. Time to Close Over Last 12 Months



Waterside Village  
Hypoluxo  
Palm Beach

30 days  
65 days  
56 days