

# Unit LPH 15 - Slade

LPH 15 - 1551 N Flagler Dr, West Palm Beach, FL, Palm Beach 33401

## Unit Information

MLS Number: RX-10970294  
 Status: Active  
 Size: 1,550 Sq ft.  
 Bedrooms: 3  
 Full Bathrooms: 3  
 Half Bathrooms: 0  
 Parking Spaces: Garage - Building  
 View: City, Intracoastal, Ocean, Pool  
 List Price: \$899,900  
 List PPSF: \$581  
 Valuated Price: \$783,000  
 Valuated PPSF: \$505

*The above valuated price is a baseline figure that does not take into account any specific renovation, upgrade, split, merge, or deterioration of the unit.*

## Building Information

Number of units: 199  
 Number of active listings for rent: 10  
 Number of active listings for sale: 18  
 Building inventory for sale: 9%  
 Number of sales over the last 12 months: 10  
 Number of sales over the last 6 months: 8  
 Number of sales over the last 3 months: 6

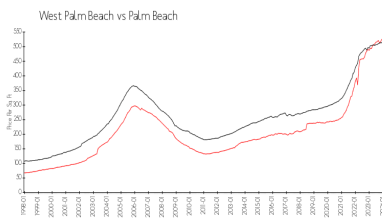
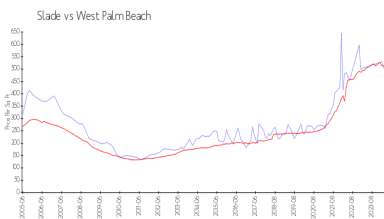
## Building Association Information

The Slade Condo Association  
 561-653-8230

## Recent Sales

Unit #	Size	Closing Date	Sale Price	PPSF
818	1,400 sq ft	Apr 2024	\$850,000	\$607
1405	1,175 sq ft	Apr 2024	\$555,000	\$472
802	1,175 sq ft	Apr 2024	\$550,000	\$468
602	1,175 sq ft	Mar 2024	\$550,000	\$468
1401	1,868 sq ft	Feb 2024	\$1,150,000	\$616
705	1,175 sq ft	Feb 2024	\$540,000	\$460

## Market Information

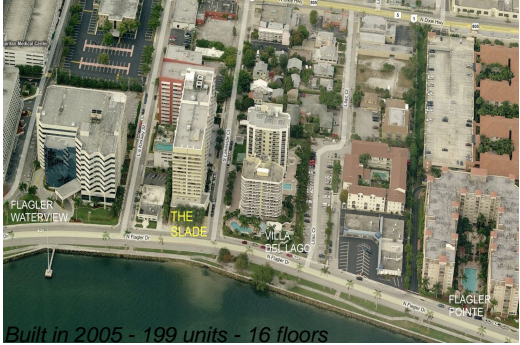


Slade: \$496/sq. ft.      West Palm Beach: \$512/sq. ft.  
 West Palm Beach: \$512/sq. ft.      Palm Beach: \$467/sq. ft.

## Inventory for Sale

Slade: 9%  
 West Palm Beach: 3%  
 Palm Beach: 3%

## Avg. Time to Close Over Last 12 Months



Slade  
West Palm Beach  
Palm Beach

71 days  
51 days  
56 days