

# Unit 8202 - Lavers Delray Racquet Club I to IX

8202 - 950 Egret Cir, Delray Beach, FL, Palm Beach 33444

## Unit Information

MLS Number:	RX-10970784
Status:	Active
Size:	1,425 Sq ft.
Bedrooms:	2
Full Bathrooms:	2
Half Bathrooms:	0
Parking Spaces:	Assigned, Guest
View:	Garden
List Price:	\$389,900
List PPSF:	\$274
Valuated Price:	\$394,000
Valuated PPSF:	\$305

The above valuated price is a baseline figure that does not take into account any specific renovation, upgrade, split, merge, or deterioration of the unit.

## Building Information

Number of units:	460
Number of active listings for rent:	16
Number of active listings for sale:	15
Building inventory for sale:	3%
Number of sales over the last 12 months:	22
Number of sales over the last 6 months:	12
Number of sales over the last 3 months:	7

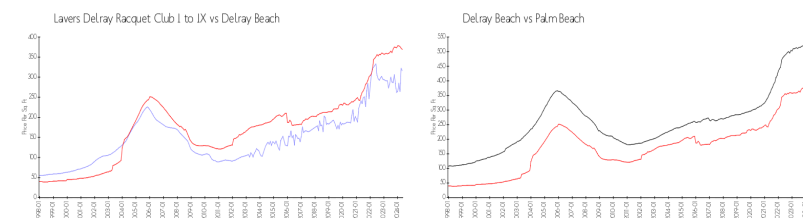
## Building Association Information

Lavers Of Delray Racquet Club,  
Delray Racquet Club Association, Inc  
610 Egret Circle  
Delray Beach, FL 33444-7930  
(561) 276-3792

## Recent Sales

Unit #	Size	Closing Date	Sale Price	PPSF
5201	758 sq ft	Jun 2024	\$190,000	\$251
3402	1,290 sq ft	Jun 2024	\$365,000	\$283
7501	1,175 sq ft	May 2024	\$400,000	\$340
8208	1,175 sq ft	May 2024	\$330,000	\$281
3208	1,290 sq ft	Apr 2024	\$385,000	\$298

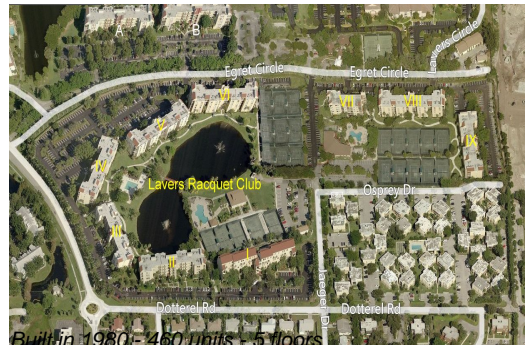
## Market Information



Lavers Delray Racquet Club I to IX:	\$316/sq. ft.	Delray Beach:	\$369/sq. ft.
Delray Beach:	\$369/sq. ft.	Palm Beach:	\$474/sq. ft.

## Inventory for Sale

Lavers Delray Racquet Club I to IX	3%
Delray Beach	2%
Palm Beach	3%



### **Avg. Time to Close Over Last 12 Months**

Lavers Delray Racquet Club I to IX	86 days
Delray Beach	55 days
Palm Beach	57 days