

# Unit 101 Lighthouse Cir # A - Tequesta Trace

101 Lighthouse Cir # A - 101 Lighthouse Cir, Jupiter, FL, Palm Beach 33469

## Unit Information

MLS Number:	RX-10972683
Status:	Active
Size:	1,426 Sq ft.
Bedrooms:	3
Full Bathrooms:	2
Half Bathrooms:	0
Parking Spaces:	Driveway,Garage - Attached
View:	Garden,Preserve
List Price:	\$395,000
List PPSF:	\$277
Valuated Price:	\$324,000
Valuated PPSF:	\$268

*The above valuated price is a baseline figure that does not take into account any specific renovation, upgrade, split, merge, or deterioration of the unit.*

## Building Information

Number of units:	134
Number of active listings for rent:	0
Number of active listings for sale:	8
Building inventory for sale:	5%
Number of sales over the last 12 months:	5
Number of sales over the last 6 months:	1
Number of sales over the last 3 months:	1

## Building Association Information

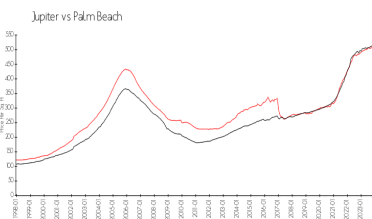
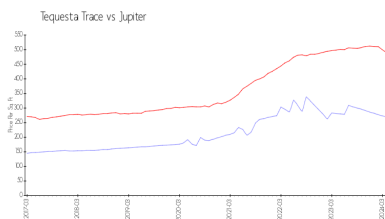
Tequesta Trace  
 CONDOMINIUM ASSOCIATION  
 Campbell Property Management  
 401 Maplewood Drive Suite 23  
 Jupiter, FL 33458  
 Phone: 561-203-7910  
 email: [jupiter@campbellproperty.com](mailto:jupiter@campbellproperty.com)

<https://www.tequestatracecondo.com/>

## Recent Sales

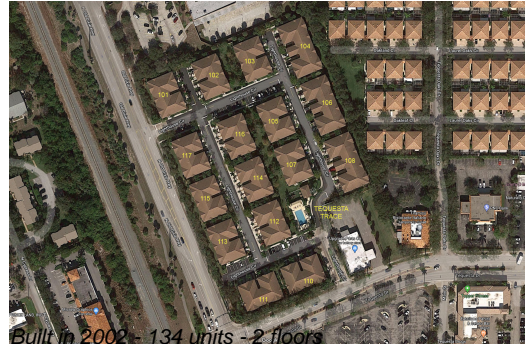
Unit #	Size	Closing Date	Sale Price	PPSF
D	2,012 sq ft	Mar 2024	\$415,000	\$206
A	1,210 sq ft	Oct 2023	\$460,000	\$380
D	1,995 sq ft	Oct 2023	\$494,000	\$248
J	1,036 sq ft	Jul 2023	\$322,000	\$311
H	1,628 sq ft	Jun 2023	\$398,000	\$244

## Market Information



Tequesta Trace:	\$269/sq. ft.	Jupiter:	\$489/sq. ft.
Jupiter:	\$489/sq. ft.	Palm Beach:	\$467/sq. ft.

## Inventory for Sale



Tequesta Trace	6%
Jupiter	3%
Palm Beach	3%

**Avg. Time to Close Over Last 12 Months**

Tequesta Trace	67 days
Jupiter	65 days
Palm Beach	56 days