

# Unit 1-230 - Flagler Pointe

1-230 - 1805 N Flagler Drive, West Palm Beach, FL, Palm Beach 33407

## Unit Information

MLS Number:	RX-10972702
Status:	Active
Size:	1,071 Sq ft.
Bedrooms:	2
Full Bathrooms:	2
Half Bathrooms:	0
Parking Spaces:	Garage - Attached
View:	Intracoastal
List Price:	\$375,000
List PPSF:	\$350
Valuated Price:	\$414,000
Valuated PPSF:	\$387

*The above valuated price is a baseline figure that does not take into account any specific renovation, upgrade, split, merge, or deterioration of the unit.*

## Building Information

Number of units:	400
Number of active listings for rent:	27
Number of active listings for sale:	24
Building inventory for sale:	6%
Number of sales over the last 12 months:	23
Number of sales over the last 6 months:	12
Number of sales over the last 3 months:	6

## Building Association Information

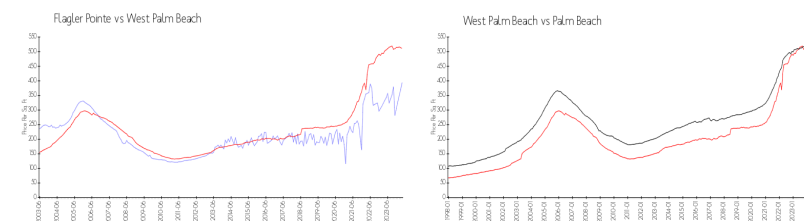
Flagler Pointe Condominium Association of  
West Palm Beach, Inc  
c/o Castle Management, LLC  
1801 North Flagler Drive  
West Palm Beach, FL 33407  
Phone: (561) 822-9970  
Concierge: (561) 833-7024

<http://flaglerpointe.us/Management-Contacts~301897~20085.htm>

## Recent Sales

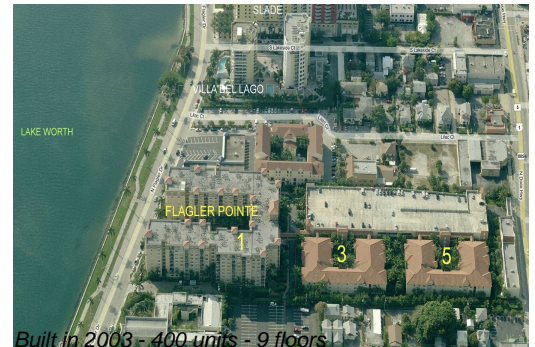
Unit #	Size	Closing Date	Sale Price	PPSF
819	1,071 sq ft	Apr 2024	\$645,000	\$602
101	1,071 sq ft	Mar 2024	\$345,000	\$322
206	828 sq ft	Mar 2024	\$299,500	\$362
403	1,071 sq ft	Mar 2024	\$395,000	\$369
816	995 sq ft	Feb 2024	\$325,000	\$327

## Market Information



Flagler Pointe:	\$394/sq. ft.	West Palm Beach:	\$511/sq. ft.
West Palm Beach:	\$511/sq. ft.	Palm Beach:	\$475/sq. ft.

## Inventory for Sale



Flagler Pointe	6%
West Palm Beach	4%
Palm Beach	3%

### **Avg. Time to Close Over Last 12 Months**

Flagler Pointe	64 days
West Palm Beach	52 days
Palm Beach	56 days