

# Unit 700 Village Green Ct # H102 - Village Green

700 Village Green Ct # H102 - 555 Purdy Ln, Palm Springs, FL, Palm Beach 334611

## Unit Information

|                 |             |
|-----------------|-------------|
| MLS Number:     | RX-10974125 |
| Status:         | Active      |
| Size:           | 720 Sq ft.  |
| Bedrooms:       | 1           |
| Full Bathrooms: | 1           |
| Half Bathrooms: | 1           |
| Parking Spaces: | Assigned    |
| View:           | Garden      |
| List Price:     | \$120,000   |
| List PPSF:      | \$167       |
| Valuated Price: | \$132,000   |
| Valuated PPSF:  | \$174       |

*The above valuated price is a baseline figure that does not take into account any specific renovation, upgrade, split, merge, or deterioration of the unit.*

## Building Information

|  |     |
|--|-----|
| Number of units:                         | 492 |
| Number of active listings for rent:      | 0   |
| Number of active listings for sale:      | 16  |
| Building inventory for sale:             | 3%  |
| Number of sales over the last 12 months: | 17  |
| Number of sales over the last 6 months:  | 6   |
| Number of sales over the last 3 months:  | 4   |

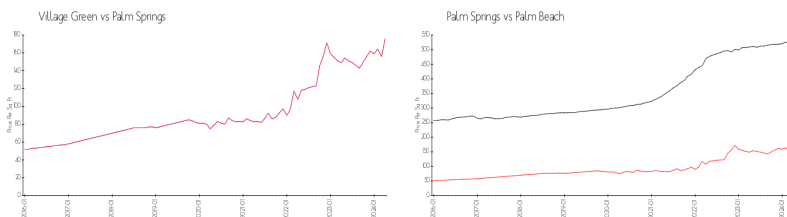
## Building Association Information

Village Green Inc  
Number 2 Condominium Association  
700 Village Green Court # 322  
Palm Springs, FL 33461  
(561) 439-6425

## Recent Sales

| Unit # | Size      | Closing Date | Sale Price | PPSF  |
|--------|-----------|--------------|------------|-------|
| 121    | 757 sq ft | May 2024     | \$120,000  | \$159 |
| 208    | 825 sq ft | Apr 2024     | \$145,000  | \$176 |
| 303    | 825 sq ft | Mar 2024     | \$130,000  | \$158 |
| 319    | 757 sq ft | Feb 2024     | \$125,000  | \$165 |
| 108    | 825 sq ft | Jan 2024     | \$130,000  | \$158 |

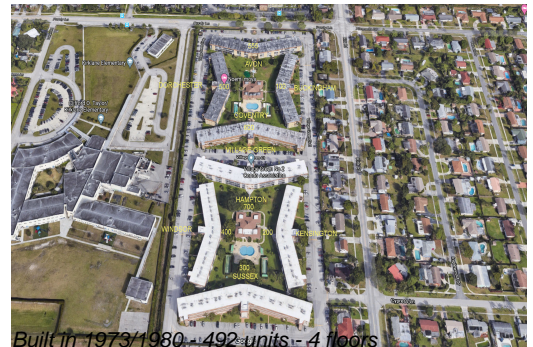
## Market Information



|                |               |               |               |
|----------------|---------------|---------------|---------------|
| Village Green: | \$176/sq. ft. | Palm Springs: | \$176/sq. ft. |
| Palm Springs:  | \$176/sq. ft. | Palm Beach:   | \$475/sq. ft. |

## Inventory for Sale

|               |    |
|---------------|----|
| Village Green | 3% |
| Palm Springs  | 3% |



|            |    |
|------------|----|
| Palm Beach | 3% |
|------------|----|

**Avg. Time to Close Over Last 12 Months**

|               |         |
|---------------|---------|
| Village Green | 44 days |
| Palm Springs  | 44 days |
| Palm Beach    | 56 days |