

# Unit 401 - City Walk Pineapple Grove

401 - 200 NE 2 Av, Delray Beach, FL, Palm Beach 33444

## Unit Information

MLS Number: RX-10974872  
 Status: Active  
 Size: 1,004 Sq ft.  
 Bedrooms: 1  
 Full Bathrooms: 1  
 Half Bathrooms: 0  
 Parking Spaces: Assigned, Guest  
 View: City  
 List Price: \$749,900  
 List PPSF: \$747  
 Valuated Price: \$718,000  
 Valuated PPSF: \$715

*The above valuated price is a baseline figure that does not take into account any specific renovation, upgrade, split, merge, or deterioration of the unit.*

## Building Information

Number of units: 40  
 Number of active listings for rent: 3  
 Number of active listings for sale: 2  
 Building inventory for sale: 5%  
 Number of sales over the last 12 months: 1  
 Number of sales over the last 6 months: 0  
 Number of sales over the last 3 months: 0

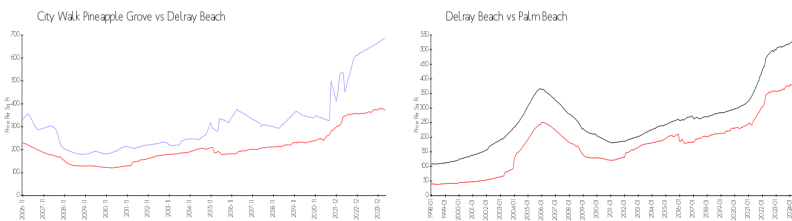
## Building Association Information

City Walk At Pineapple Grove  
 200 NE 2nd Ave, Delray Beach, FL 33444  
 (561) 266-5970

## Recent Sales

Unit #	Size	Closing Date	Sale Price	PPSF
410	1,531 sq ft	Oct 2023	\$950,000	\$621

## Market Information



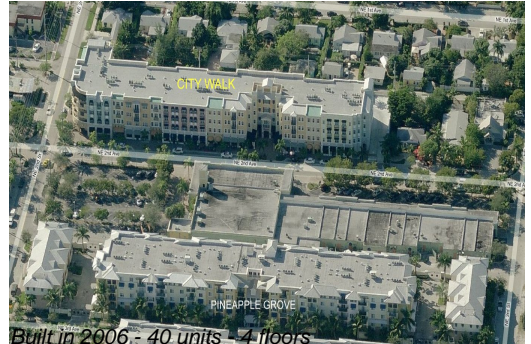
City Walk Pineapple Grove:	\$687/sq. ft.	Delray Beach:	\$371/sq. ft.
Delray Beach:	\$371/sq. ft.	Palm Beach:	\$475/sq. ft.

## Inventory for Sale

City Walk Pineapple Grove	5%
Delray Beach	3%
Palm Beach	3%

## Avg. Time to Close Over Last 12 Months

City Walk Pineapple Grove	88 days
Delray Beach	54 days



Palm Beach

56 days