

# Unit 19206 Glenmoor Dr - Sterling Villages of Palm Beach Lakes

19206 Glenmoor Dr - 1101-22304 Glenmoor Dr, West Palm Beach, FL, Palm Beach 33409

## Unit Information

|                 |                |
|-----------------|----------------|
| MLS Number:     | RX-10976577    |
| Status:         | Active         |
| Size:           | 980 Sq ft.     |
| Bedrooms:       | 2              |
| Full Bathrooms: | 2              |
| Half Bathrooms: | 0              |
| Parking Spaces: | Assigned,Guest |
| View:           | Tennis         |
| List Price:     | \$249,000      |
| List PPSF:      | \$254          |
| Valuated Price: | \$168,000      |
| Valuated PPSF:  | \$171          |

*The above valuated price is a baseline figure that does not take into account any specific renovation, upgrade, split, merge, or deterioration of the unit.*

## Building Information

|  |     |
|--|-----|
| Number of units:                         | 319 |
| Number of active listings for rent:      | 0   |
| Number of active listings for sale:      | 11  |
| Building inventory for sale:             | 3%  |
| Number of sales over the last 12 months: | 21  |
| Number of sales over the last 6 months:  | 13  |
| Number of sales over the last 3 months:  | 8   |

## Building Association Information

Sterling Villages-Palm Beach  
 Address: 1100 Village Blvd,  
 West Palm Beach, FL 33409,  
 Phone: +1 561-471-9292

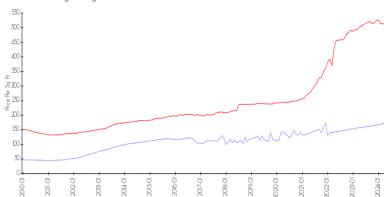
<http://www.thesterlingwpb.com/>

## Recent Sales

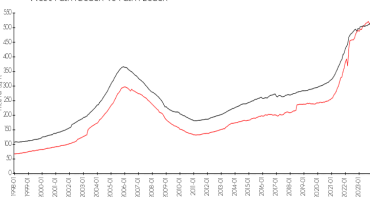
| Unit # | Size      | Closing Date | Sale Price | PPSF  |
|--------|-----------|--------------|------------|-------|
| 0      | 800 sq ft | Apr 2024     | \$180,000  | \$225 |
|        | 850 sq ft | Apr 2024     | \$185,000  | \$218 |
|        | 800 sq ft | Apr 2024     | \$187,000  | \$234 |
|        | 980 sq ft | Apr 2024     | \$227,000  | \$232 |
|        | 750 sq ft | Apr 2024     | \$195,000  | \$260 |

## Market Information

Sterling Villages of Palm Beach Lakes vs West Palm Beach

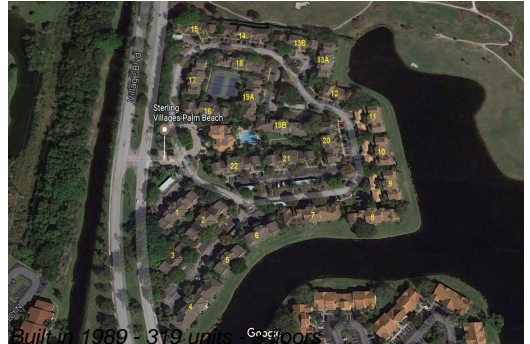


West Palm Beach vs Palm Beach



Sterling Villages of Palm Beach Lakes: \$172/sq. ft.  
 West Palm Beach: \$512/sq. ft.

West Palm Beach: \$512/sq. ft.  
 Palm Beach: \$467/sq. ft.



### **Inventory for Sale**

|                                       |    |
|---------------------------------------|----|
| Sterling Villages of Palm Beach Lakes | 3% |
| West Palm Beach                       | 3% |
| Palm Beach                            | 3% |

### **Avg. Time to Close Over Last 12 Months**

|                                       |         |
|---------------------------------------|---------|
| Sterling Villages of Palm Beach Lakes | 37 days |
| West Palm Beach                       | 51 days |
| Palm Beach                            | 56 days |