

# Unit 101M - Ocean Parks (A to O)

101M - 300 N Highway A1A, Jupiter, FL, Palm Beach 33477

## Unit Information

MLS Number: RX-10977275  
 Status: Active  
 Size: 1,936 Sq ft.  
 Bedrooms: 3  
 Full Bathrooms: 3  
 Half Bathrooms: 0  
 Parking Spaces: Carport - Detached, Deeded, Guest, Open, Vehicle Restrictions  
 View: Garden  
 List Price: \$794,000  
 List PPSF: \$410  
 Valuated Price: \$498,000  
 Valuated PPSF: \$257

*The above valuated price is a baseline figure that does not take into account any specific renovation, upgrade, split, merge, or deterioration of the unit.*

## Building Information

Number of units: 328  
 Number of active listings for rent: 0  
 Number of active listings for sale: 16  
 Building inventory for sale: 4%  
 Number of sales over the last 12 months: 10  
 Number of sales over the last 6 months: 6  
 Number of sales over the last 3 months: 2

## Building Association Information

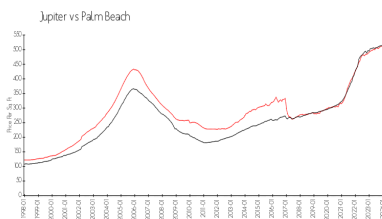
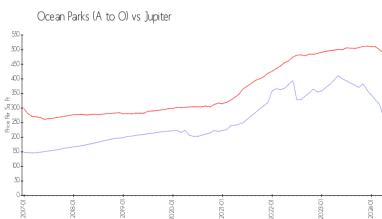
Ocean Parks Office  
 300 N. Ocean Blvd (Hwy. A1A)  
 Jupiter, FL 33477-9510  
 (561) 744-0668  
 (561) 575-2874 (fax)

<https://www.oceanparks.com/>

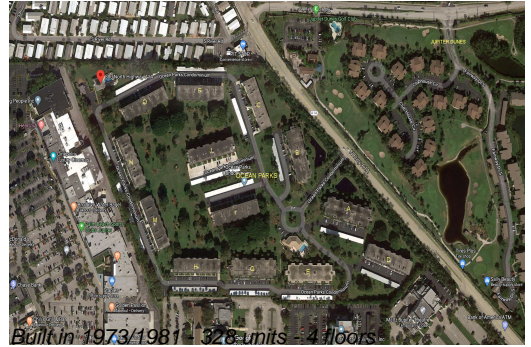
## Recent Sales

Unit #	Size	Closing Date	Sale Price	PPSF
103o	1,520 sq ft	Apr 2024	\$350,000	\$230
304f	1,520 sq ft	Mar 2024	\$475,000	\$313
102n	1,520 sq ft	Jan 2024	\$635,000	\$418
106n	1,936 sq ft	Dec 2023	\$795,500	\$411
105g	1,807 sq ft	Nov 2023	\$730,000	\$404
103m	1,520 sq ft	Nov 2023	\$530,000	\$349

## Market Information



Ocean Parks (A to O):	\$261/sq. ft.	Jupiter:	\$489/sq. ft.
Jupiter:	\$489/sq. ft.	Palm Beach:	\$467/sq. ft.



## Inventory for Sale

Ocean Parks (A to O)	5%
Jupiter	3%
Palm Beach	3%

## Avg. Time to Close Over Last 12 Months

Ocean Parks (A to O)	73 days
Jupiter	65 days
Palm Beach	56 days