

# Unit 360-304 - Kensington of Royal Palm Beach

360-304 - 210-360 Crestwood Cir, Royal Palm Beach, FL, Palm Beach 33411

## Unit Information

MLS Number:	RX-10978790
Status:	Active
Size:	1,263 Sq ft.
Bedrooms:	2
Full Bathrooms:	2
Half Bathrooms:	0
Parking Spaces:	Assigned, Guest
View:	Garden
Rental Price:	\$2,200
List PPSF:	\$2
Valuated Price:	\$288,000
Valuated PPSF:	\$236

*The above valuated price is a baseline figure that does not take into account any specific renovation, upgrade, split, merge, or deterioration of the unit.*

## Building Information

Number of units:	166
Number of active listings for rent:	0
Number of active listings for sale:	0
Building inventory for sale:	0%
Number of sales over the last 12 months:	6
Number of sales over the last 6 months:	2
Number of sales over the last 3 months:	0

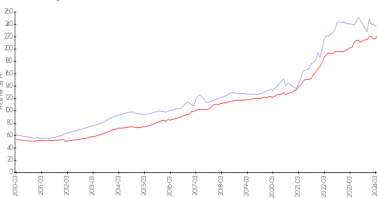
## Building Association Information

Kensington of Royal Palm Beach  
 c/o GRS Management Associates  
 3900 Woodlake Blvd. Suite 309  
 Lake Worth, FL 33463  
 TEL: 561-641-8554  
 FAX: 561-641-9448

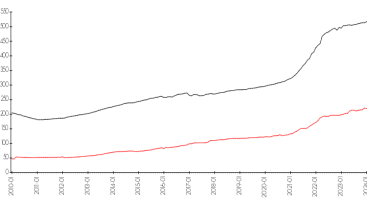
<https://www.grsmgt.com/association/kensington/>

## Market Information

Kensington of Royal Palm Beach vs Royal Palm Beach



Royal Palm Beach vs Palm Beach



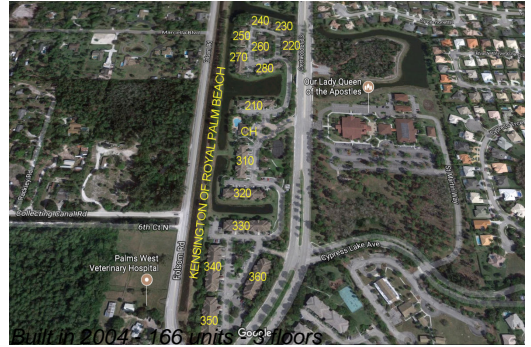
Kensington of Royal Palm Beach: \$237/sq. ft.  
 Royal Palm Beach: \$223/sq. ft.

Royal Palm Beach: \$223/sq. ft.  
 Palm Beach: \$467/sq. ft.

## Inventory for Sale

Kensington of Royal Palm Beach	0%
Royal Palm Beach	1%
Palm Beach	3%

## Avg. Time to Close Over Last 12 Months



Kensington of Royal Palm Beach	32 days
Royal Palm Beach	34 days
Palm Beach	56 days