

Unit 1900 N Congress Ave # 407 - Presidential Golfview

1900 N Congress Ave # 407 - 1700 N Congress Ave, West Palm Beach, FL, Palm Beach 33401

Unit Information

MLS Number: RX-10979618
 Status: Active
 Size: 850 Sq ft.
 Bedrooms: 2
 Full Bathrooms: 1
 Half Bathrooms: 1
 Parking Spaces:
 View:
 List Price: \$187,000
 List PPSF: \$220
 Valuated Price: \$167,000
 Valuated PPSF: \$196

The above valuated price is a baseline figure that does not take into account any specific renovation, upgrade, split, merge, or deterioration of the unit.

Building Information

Number of units: 436
 Number of active listings for rent: 0
 Number of active listings for sale: 6
 Building inventory for sale: 1%
 Number of sales over the last 12 months: 16
 Number of sales over the last 6 months: 7
 Number of sales over the last 3 months: 3

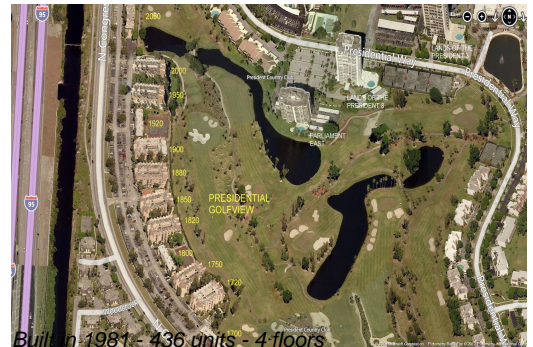
Building Association Information

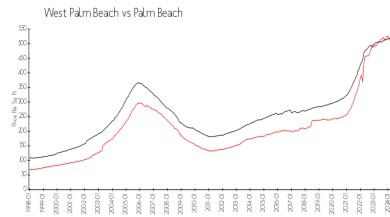
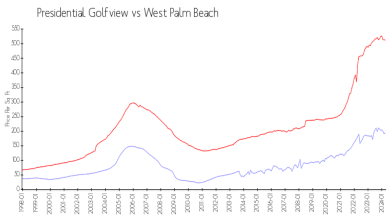
Presidential Golfview Condo
 West Palm Beach, FL 33401
 1700 N Congress Ave Apt A,
 (561) 684-7725
 1720 N Congress Ave Apt A,
 (561) 471-0981
 1750 N Congress Ave,
 (561) 688-0892
 1820 N Congress Ave Apt A,
 (561) 686-6342
 1850 N Congress Ave,
 (561) 686-1077
 1860 N Congress Ave
 (561) 686-4948
 1900 S Congress Ave Ste A,
 (561) 683-7512
 2000 N Congress Ave # A,
 (561) 684-1531

Recent Sales

Unit #	Size	Closing Date	Sale Price	PPSF
209	775 sq ft	Apr 2024	\$138,500	\$179
411	1,030 sq ft	Mar 2024	\$182,000	\$177
210	775 sq ft	Mar 2024	\$161,500	\$208
407	850 sq ft	Jan 2024	\$167,500	\$197
102	775 sq ft	Jan 2024	\$165,000	\$213

Market Information





Presidential	\$193/sq. ft.	West Palm Beach:	\$512/sq. ft.
Golfview:		Palm Beach:	\$467/sq. ft.
West Palm Beach:	\$512/sq. ft.		

Inventory for Sale

Presidential Golfview	1%
West Palm Beach	3%
Palm Beach	3%

Avg. Time to Close Over Last 12 Months

Presidential Golfview	30 days
West Palm Beach	51 days
Palm Beach	56 days