

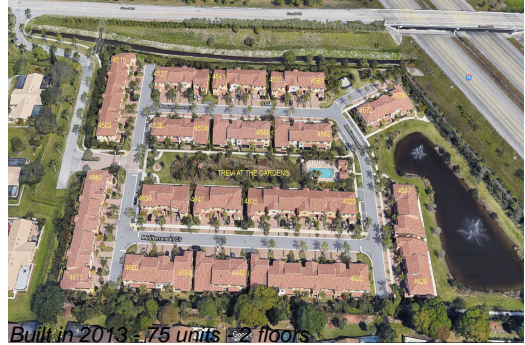
Unit 4644 Mediterranean Cir - Trevi at the Gardens

4644 Mediterranean Cir - 4503-4683 Mediterranean Cir, Palm Beach Gardens, FL, Palm Beach 33418

Unit Information

MLS Number:	RX-10980744
Status:	Active
Size:	2,387 Sq ft.
Bedrooms:	3
Full Bathrooms:	2
Half Bathrooms:	1
Parking Spaces:	2+ Spaces, Driveway, Garage - Attached
View:	Garden
Rental Price:	\$3,300
List PPSF:	\$1
Valuated Price:	\$542,000
Valuated PPSF:	\$315

The above valuated price is a baseline figure that does not take into account any specific renovation, upgrade, split, merge, or deterioration of the unit.



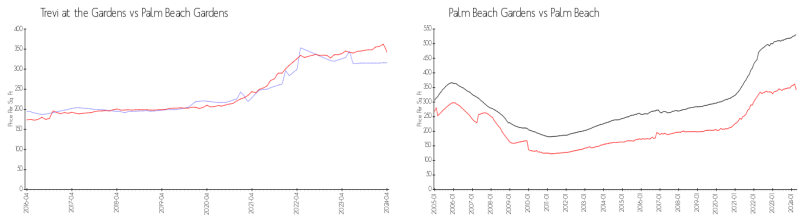
Building Information

Number of units:	75
Number of active listings for rent:	0
Number of active listings for sale:	5
Building inventory for sale:	6%
Number of sales over the last 12 months:	3
Number of sales over the last 6 months:	1
Number of sales over the last 3 months:	1

Building Association Information

Trevi at the Gardens HOA
 Address 4580 Mediterranean Cir
 Palm Beach Gardens, FL33418
 Phone +1 561-249-0489

Market Information



Trevi at the Gardens:	\$316/sq. ft.	Palm Beach Gardens:	\$342/sq. ft.
Palm Beach Gardens:	\$342/sq. ft.	Palm Beach:	\$475/sq. ft.

Inventory for Sale

Trevi at the Gardens	7%
Palm Beach Gardens	2%
Palm Beach	3%

Avg. Time to Close Over Last 12 Months

Trevi at the Gardens	51 days
Palm Beach Gardens	47 days
Palm Beach	56 days