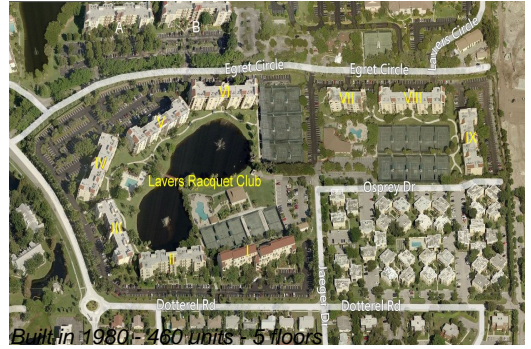


Unit 1201 - Lavers Delray Racquet Club I to IX

1201 - 950 Egret Cir, Delray Beach, FL, Palm Beach 33444



Unit Information

MLS Number: RX-10981719
 Status: Active
 Size: 758 Sq ft.
 Bedrooms: 1
 Full Bathrooms: 1
 Half Bathrooms: 1
 Parking Spaces: Assigned, Guest
 View: Garden, Tennis
 Rental Price: \$2,000
 List PPSF: \$3
 Valuated Price: \$210,000
 Valuated PPSF: \$277

The above valuated price is a baseline figure that does not take into account any specific renovation, upgrade, split, merge, or deterioration of the unit.

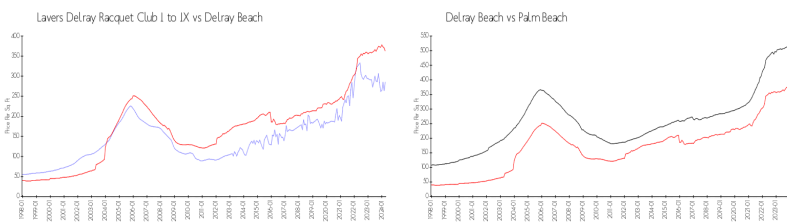
Building Information

Number of units: 460
 Number of active listings for rent: 16
 Number of active listings for sale: 14
 Building inventory for sale: 3%
 Number of sales over the last 12 months: 21
 Number of sales over the last 6 months: 9
 Number of sales over the last 3 months: 6

Building Association Information

Lavers Of Delray Racquet Club,
 Delray Racquet Club Association, Inc
 610 Egret Circle
 Delray Beach, FL 33444-7930
 (561) 276-3792

Market Information



Lavers Delray Racquet Club I to IX:	\$286/sq. ft.	Delray Beach:	\$362/sq. ft.
Delray Beach:	\$362/sq. ft.	Palm Beach:	\$467/sq. ft.

Inventory for Sale

Lavers Delray Racquet Club I to IX: 3%
 Delray Beach: 2%
 Palm Beach: 3%

Avg. Time to Close Over Last 12 Months

Lavers Delray Racquet Club I to IX: 87 days
 Delray Beach: 54 days
 Palm Beach: 56 days