

# Unit Sea Rise E-401 - Jupiter Ocean & Racquet Club

Sea Rise E-401 - 1605 S US Hwy 1, Jupiter, FL, Palm Beach 33477

## Unit Information

|                 |              |
|-----------------|--------------|
| MLS Number:     | RX-10982626  |
| Status:         | Active       |
| Size:           | 1,183 Sq ft. |
| Bedrooms:       | 2            |
| Full Bathrooms: | 2            |
| Half Bathrooms: | 0            |
| Parking Spaces: | Assigned     |
| View:           | Lagoon,Pond  |
| List Price:     | \$590,000    |
| List PPSF:      | \$499        |
| Valuated Price: | \$503,000    |
| Valuated PPSF:  | \$425        |

*The above valuated price is a baseline figure that does not take into account any specific renovation, upgrade, split, merge, or deterioration of the unit.*

## Building Information

|  |     |
|--|-----|
| Number of units:                         | 435 |
| Number of active listings for rent:      | 0   |
| Number of active listings for sale:      | 18  |
| Building inventory for sale:             | 4%  |
| Number of sales over the last 12 months: | 21  |
| Number of sales over the last 6 months:  | 10  |
| Number of sales over the last 3 months:  | 5   |

## Building Association Information

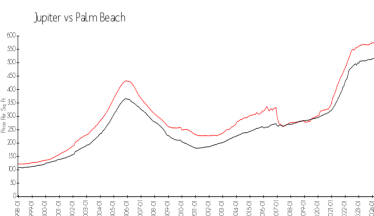
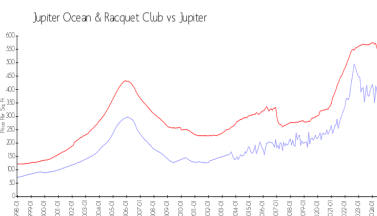
Jupiter Ocean & Racquet Club Association Address: 1605 U.S. 1,  
Jupiter, FL 33477  
Phone:(561) 747-5331

<http://jorcinc.net/site/>

## Recent Sales

| Unit # | Size        | Closing Date | Sale Price | PPSF  |
|--------|-------------|--------------|------------|-------|
| D101   | 1,183 sq ft | Sep 2024     | \$475,000  | \$402 |
| A204   | 860 sq ft   | Sep 2024     | \$370,000  | \$430 |
| 1a     | 740 sq ft   | Aug 2024     | \$322,500  | \$436 |
| 6b     | 740 sq ft   | Aug 2024     | \$335,000  | \$453 |
| F304   | 860 sq ft   | Jul 2024     | \$360,000  | \$419 |

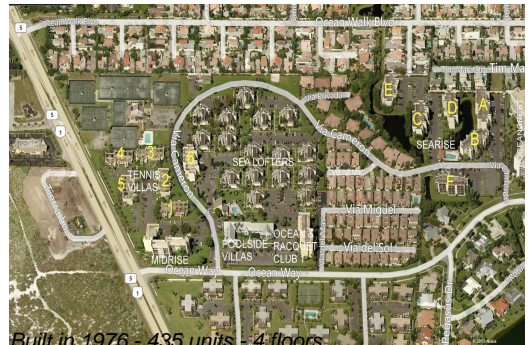
## Market Information



|                               |               |             |               |
|-------------------------------|---------------|-------------|---------------|
| Jupiter Ocean & Racquet Club: | \$398/sq. ft. | Jupiter:    | \$548/sq. ft. |
| Jupiter:                      | \$548/sq. ft. | Palm Beach: | \$471/sq. ft. |

## Inventory for Sale

|                              |    |
|------------------------------|----|
| Jupiter Ocean & Racquet Club | 4% |
| Jupiter                      | 3% |
| Palm Beach                   | 3% |



Built in 1976 - 435 units - 4 floors

**Avg. Time to Close Over Last 12 Months**

|                              |         |
|------------------------------|---------|
| Jupiter Ocean & Racquet Club | 61 days |
| Jupiter                      | 67 days |
| Palm Beach                   | 58 days |