

Unit Sea Rise F-104 - Jupiter Ocean & Racquet Club

Sea Rise F-104 - 1605 S US Hwy 1, Jupiter, FL, Palm Beach 33477

Unit Information

MLS Number:	RX-10982913
Status:	Cancelled
Size:	860 Sq ft.
Bedrooms:	1
Full Bathrooms:	1
Half Bathrooms:	1
Parking Spaces:	Assigned, Vehicle Restrictions
View:	Canal, Garden
List Price:	\$425,000
List PPSF:	\$494
Valuated Price:	\$354,000
Valuated PPSF:	\$412

The above valuated price is a baseline figure that does not take into account any specific renovation, upgrade, split, merge, or deterioration of the unit.

Building Information

Number of units:	435
Number of active listings for rent:	0
Number of active listings for sale:	21
Building inventory for sale:	4%
Number of sales over the last 12 months:	20
Number of sales over the last 6 months:	10
Number of sales over the last 3 months:	6

Building Association Information

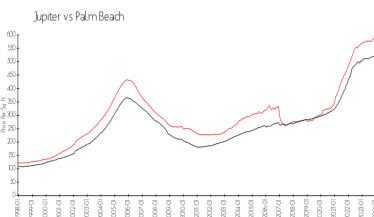
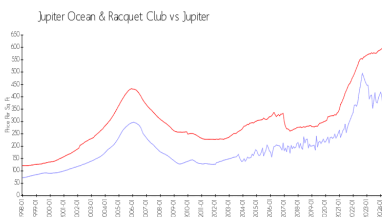
Jupiter Ocean & Racquet Club Association Address: 1605 U.S. 1,
Jupiter, FL 33477
Phone: (561) 747-5331

<http://jorcinc.net/site/>

Recent Sales

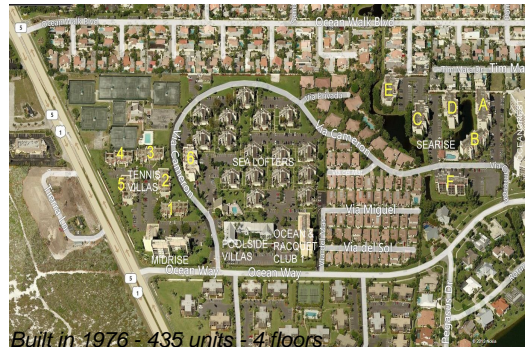
Unit #	Size	Closing Date	Sale Price	PPSF
M1-104	2,336 sq ft	Jun 2024	\$397,000	\$170
A406	860 sq ft	May 2024	\$365,000	\$424
3-E	1,160 sq ft	May 2024	\$588,000	\$507
3G	1,160 sq ft	Apr 2024	\$470,000	\$405
3h	1,160 sq ft	Apr 2024	\$600,000	\$517

Market Information



Jupiter Ocean & Racquet Club:	\$397/sq. ft.	Jupiter:	\$570/sq. ft.
Jupiter:	\$570/sq. ft.	Palm Beach:	\$474/sq. ft.

Inventory for Sale



Built in 1976 - 435 units - 4 floors

Jupiter Ocean & Racquet Club	5%
Jupiter	3%
Palm Beach	3%

Avg. Time to Close Over Last 12 Months

Jupiter Ocean & Racquet Club	65 days
Jupiter	68 days
Palm Beach	57 days