

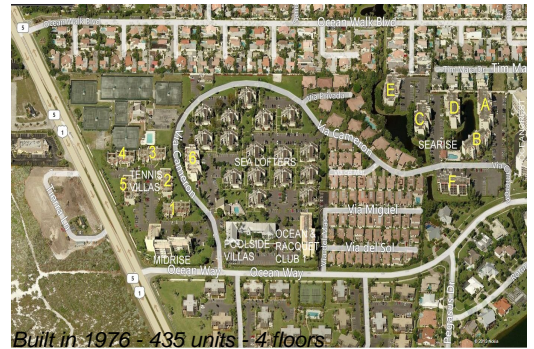
# Unit Sea Lofters E-4 - Jupiter Ocean & Racquet Club

Sea Lofters E-4 - 1605 S US Hwy 1, Jupiter, FL, Palm Beach 33477

## Unit Information

MLS Number:	RX-10984022
Status:	Temp Off Market
Size:	1,407 Sq ft.
Bedrooms:	2
Full Bathrooms:	2
Half Bathrooms:	0
Parking Spaces:	Assigned,Vehicle Restrictions
View:	Garden
List Price:	\$539,000
List PPSF:	\$383
Valuated Price:	\$516,000
Valuated PPSF:	\$445

*The above valuated price is a baseline figure that does not take into account any specific renovation, upgrade, split, merge, or deterioration of the unit.*



## Building Information

Number of units:	435
Number of active listings for rent:	0
Number of active listings for sale:	18
Building inventory for sale:	4%
Number of sales over the last 12 months:	21
Number of sales over the last 6 months:	10
Number of sales over the last 3 months:	5

## Building Association Information

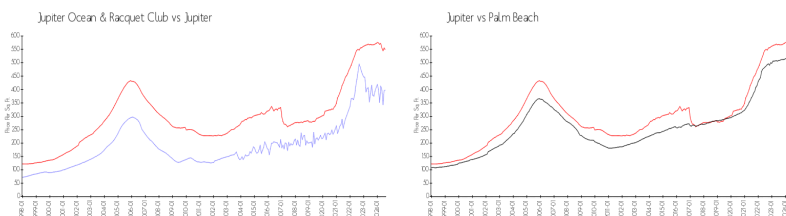
Jupiter Ocean & Racquet Club AssociationAddress: 1605 U.S. 1,  
Jupiter, FL 33477  
Phone:(561) 747-5331

<http://jorcinc.net/site/>

## Recent Sales

Unit #	Size	Closing Date	Sale Price	PPSF
D101	1,183 sq ft	Sep 2024	\$475,000	\$402
A204	860 sq ft	Sep 2024	\$370,000	\$430
1a	740 sq ft	Aug 2024	\$322,500	\$436
6b	740 sq ft	Aug 2024	\$335,000	\$453
F304	860 sq ft	Jul 2024	\$360,000	\$419

## Market Information



Jupiter Ocean & Racquet Club:	\$398/sq. ft.	Jupiter:	\$548/sq. ft.
Jupiter:	\$548/sq. ft.	Palm Beach:	\$471/sq. ft.

## Inventory for Sale

Jupiter Ocean & Racquet Club	4%
Jupiter	3%
Palm Beach	3%

**Avg. Time to Close Over Last 12 Months**

Jupiter Ocean & Racquet Club	61 days
Jupiter	67 days
Palm Beach	58 days