

# Unit 2104 - Lavers Delray Racquet Club I to IX

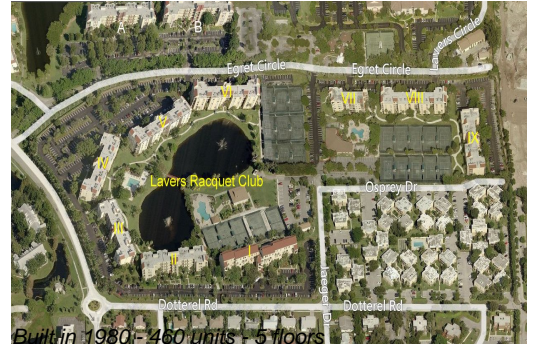
2104 - 950 Egret Cir, Delray Beach, FL, Palm Beach 33444



## Unit Information

MLS Number: RX-10985335  
 Status: Active  
 Size: 1,175 Sq ft.  
 Bedrooms: 2  
 Full Bathrooms: 2  
 Half Bathrooms: 0  
 Parking Spaces: Assigned  
 View: Lake  
 Rental Price: \$2,800  
 List PPSF: \$2  
 Valuated Price: \$315,000  
 Valuated PPSF: \$268

*The above valuated price is a baseline figure that does not take into account any specific renovation, upgrade, split, merge, or deterioration of the unit.*



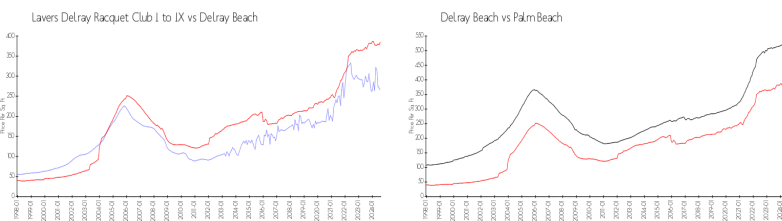
## Building Information

Number of units: 460  
 Number of active listings for rent: 16  
 Number of active listings for sale: 13  
 Building inventory for sale: 2%  
 Number of sales over the last 12 months: 19  
 Number of sales over the last 6 months: 10  
 Number of sales over the last 3 months: 4

## Building Association Information

Lavers Of Delray Racquet Club,  
 Delray Racquet Club Association, Inc  
 610 Egret Circle  
 Delray Beach, FL 33444-7930  
 (561) 276-3792

## Market Information



Lavers Delray Racquet Club I to IX:	\$266/sq. ft.	Delray Beach:	\$385/sq. ft.
Delray Beach:	\$385/sq. ft.	Palm Beach:	\$476/sq. ft.

## Inventory for Sale

Lavers Delray Racquet Club I to IX: 3%  
 Delray Beach: 2%  
 Palm Beach: 3%

## Avg. Time to Close Over Last 12 Months

Lavers Delray Racquet Club I to IX: 82 days  
 Delray Beach: 55 days  
 Palm Beach: 59 days