

Unit 1-910 - Flagler Pointe

1-910 - 1805 N Flagler Drive, West Palm Beach, FL, Palm Beach 33407

Unit Information

MLS Number:	RX-10985632
Status:	Active
Size:	1,071 Sq ft.
Bedrooms:	2
Full Bathrooms:	2
Half Bathrooms:	0
Parking Spaces:	Assigned, Garage - Building, Guest
View:	Intracoastal
Rental Price:	\$2,745
List PPSF:	\$3
Valuated Price:	\$527,000
Valuated PPSF:	\$492

The above valuated price is a baseline figure that does not take into account any specific renovation, upgrade, split, merge, or deterioration of the unit.

Building Information

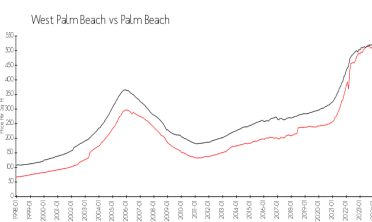
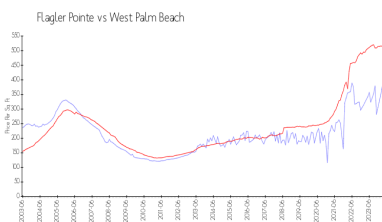
Number of units:	400
Number of active listings for rent:	27
Number of active listings for sale:	24
Building inventory for sale:	6%
Number of sales over the last 12 months:	26
Number of sales over the last 6 months:	16
Number of sales over the last 3 months:	8

Building Association Information

Flagler Pointe Condominium Association of
West Palm Beach, Inc
c/o Castle Management, LLC
1801 North Flagler Drive
West Palm Beach, FL 33407
Phone: (561) 822-9970
Concierge: (561) 833-7024

<http://flaglerpointe.us/Management-Contacts~301897~20085.htm>

Market Information



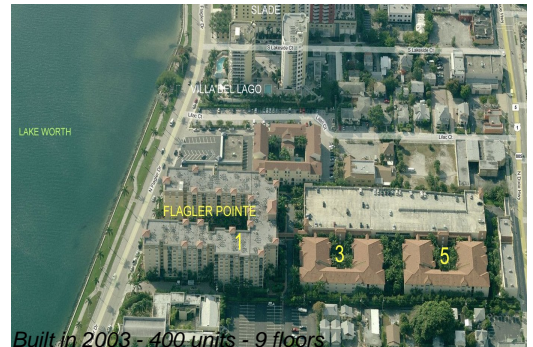
Flagler Pointe:	\$433/sq. ft.	West Palm Beach:	\$509/sq. ft.
West Palm Beach:	\$509/sq. ft.	Palm Beach:	\$474/sq. ft.

Inventory for Sale

Flagler Pointe	6%
West Palm Beach	3%
Palm Beach	3%

Avg. Time to Close Over Last 12 Months

Flagler Pointe	66 days
West Palm Beach	53 days



Palm Beach

57 days