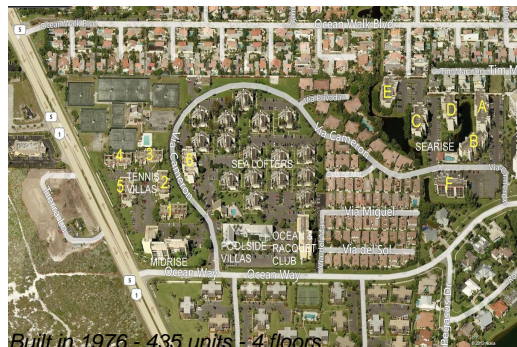


# Unit Sea Lofters H-12 - Jupiter Ocean & Racquet Club

Sea Lofters H-12 - 1605 S US Hwy 1, Jupiter, FL, Palm Beach 33477

## Unit Information

MLS Number:	RX-10988096
Status:	Active
Size:	1,160 Sq ft.
Bedrooms:	2
Full Bathrooms:	2
Half Bathrooms:	0
Parking Spaces:	Assigned, Vehicle Restrictions
View:	Garden
Rental Price:	\$2,000
List PPSF:	\$2
Valuated Price:	\$515,000
Valuated PPSF:	\$444



The above valuated price is a baseline figure that does not take into account any specific renovation, upgrade, split, merge, or deterioration of the unit.

## Building Information

Number of units:	435
Number of active listings for rent:	0
Number of active listings for sale:	22
Building inventory for sale:	5%
Number of sales over the last 12 months:	19
Number of sales over the last 6 months:	8
Number of sales over the last 3 months:	4

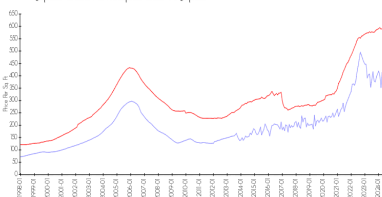
## Building Association Information

Jupiter Ocean & Racquet Club Association Address: 1605 U.S. 1,  
Jupiter, FL 33477  
Phone: (561) 747-5331

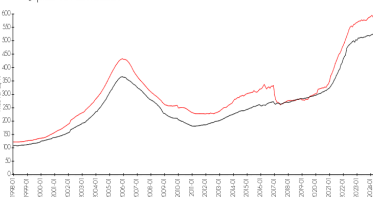
<http://jorcinc.net/site/>

## Market Information

Jupiter Ocean & Racquet Club vs Jupiter



Jupiter vs Palm Beach



Jupiter Ocean & Racquet Club: \$397/sq. ft.  
Jupiter: \$570/sq. ft.

Jupiter: \$570/sq. ft.  
Palm Beach: \$474/sq. ft.

## Inventory for Sale

Jupiter Ocean & Racquet Club	5%
Jupiter	3%
Palm Beach	3%

## Avg. Time to Close Over Last 12 Months

Jupiter Ocean & Racquet Club	65 days
Jupiter	68 days
Palm Beach	57 days