

# Unit 807 Mainsail Cir - Sea Colony

807 Mainsail Cir - 101-1909 Mainsail Cir, Jupiter, FL, Palm Beach 33477

## Unit Information

MLS Number: RX-10988945  
 Status: Active  
 Size: 1,620 Sq ft.  
 Bedrooms: 2  
 Full Bathrooms: 2  
 Half Bathrooms: 0  
 Parking Spaces: 2+ Spaces,Covered,Driveway,Garage - Attached,Guest  
 View: Lake  
 Rental Price: \$5,500  
 List PPSF: \$3  
 Valuated Price: \$709,000  
 Valuated PPSF: \$438

*The above valuated price is a baseline figure that does not take into account any specific renovation, upgrade, split, merge, or deterioration of the unit.*

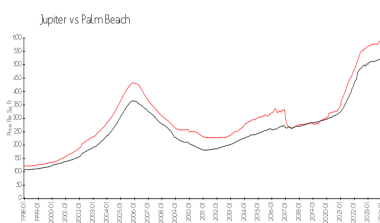
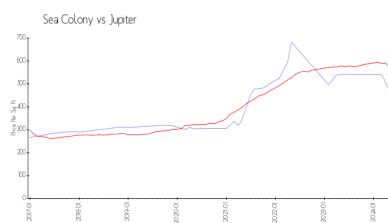
## Building Information

Number of units: 171  
 Number of active listings for rent: 0  
 Number of active listings for sale: 3  
 Building inventory for sale: 1%  
 Number of sales over the last 12 months: 5  
 Number of sales over the last 6 months: 4  
 Number of sales over the last 3 months: 1

## Building Association Information

Sea Colony Community Association  
 Address: 1910 Mainsail Cir,  
 Jupiter, FL 33477  
 Phone: +1 561-743-5411

## Market Information



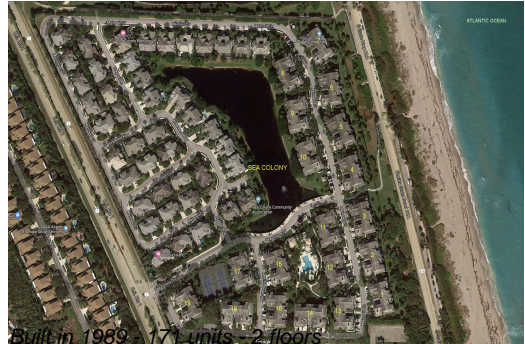
|             |               |             |               |
|-------------|---------------|-------------|---------------|
| Sea Colony: | \$465/sq. ft. | Jupiter:    | \$570/sq. ft. |
| Jupiter:    | \$570/sq. ft. | Palm Beach: | \$474/sq. ft. |

## Inventory for Sale

|            |    |
|------------|----|
| Sea Colony | 2% |
| Jupiter    | 3% |
| Palm Beach | 3% |

## Avg. Time to Close Over Last 12 Months

|            |         |
|------------|---------|
| Sea Colony | 66 days |
| Jupiter    | 68 days |
| Palm Beach | 57 days |



Built in 1989 - 171 units - 2 floors