

Unit 5509 - Lavers Delray Racquet Club I to IX

5509 - 950 Egret Cir, Delray Beach, FL, Palm Beach 33444

Unit Information

MLS Number:	RX-10988991
Status:	Active Under Contract
Size:	1,300 Sq ft.
Bedrooms:	2
Full Bathrooms:	2
Half Bathrooms:	0
Parking Spaces:	Assigned, Guest
View:	Lake
List Price:	\$349,900
List PPSF:	\$269
Valuated Price:	\$311,000
Valuated PPSF:	\$265

The above valuated price is a baseline figure that does not take into account any specific renovation, upgrade, split, merge, or deterioration of the unit.

Building Information

Number of units:	460
Number of active listings for rent:	16
Number of active listings for sale:	13
Building inventory for sale:	2%
Number of sales over the last 12 months:	19
Number of sales over the last 6 months:	10
Number of sales over the last 3 months:	4

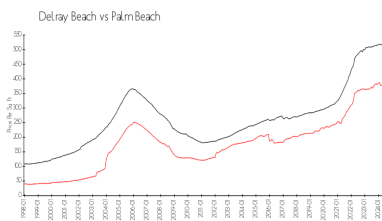
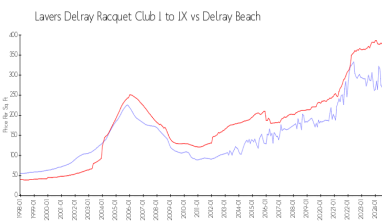
Building Association Information

Lavers Of Delray Racquet Club,
 Delray Racquet Club Association, Inc
 610 Egret Circle
 Delray Beach, FL 33444-7930
 (561) 276-3792

Recent Sales

Unit #	Size	Closing Date	Sale Price	PPSF
8303	1,175 sq ft	Aug 2024	\$305,000	\$260
2507	1,725 sq ft	Jun 2024	\$475,000	\$275
5201	758 sq ft	Jun 2024	\$190,000	\$251
3402	1,290 sq ft	Jun 2024	\$365,000	\$283
7501	1,175 sq ft	May 2024	\$400,000	\$340
8208	1,175 sq ft	May 2024	\$330,000	\$281

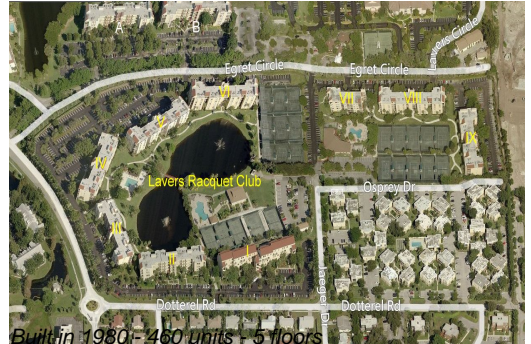
Market Information



Lavers Delray Racquet Club I to IX:	\$266/sq. ft.	Delray Beach:	\$385/sq. ft.
Delray Beach:	\$385/sq. ft.	Palm Beach:	\$476/sq. ft.

Inventory for Sale

Lavers Delray Racquet Club I to IX	3%
Delray Beach	2%



Palm Beach

3%

Avg. Time to Close Over Last 12 Months

Lavers Delray Racquet Club I to IX	82 days
Delray Beach	55 days
Palm Beach	59 days