

Unit 5411 - Lavers Delray Racquet Club I to IX

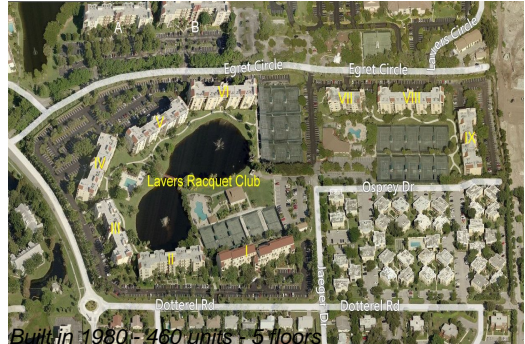
5411 - 950 Egret Cir, Delray Beach, FL, Palm Beach 33444



Unit Information

MLS Number:	RX-10991219
Status:	Active Under Contract
Size:	758 Sq ft.
Bedrooms:	1
Full Bathrooms:	1
Half Bathrooms:	0
Parking Spaces:	
View:	
Rental Price:	\$3,500
List PPSF:	\$5
Valuated Price:	\$199,000
Valuated PPSF:	\$263

The above valuated price is a baseline figure that does not take into account any specific renovation, upgrade, split, merge, or deterioration of the unit.



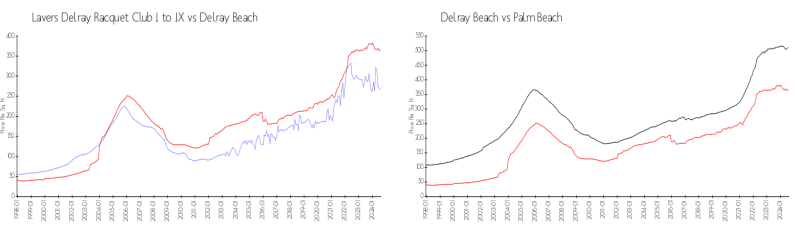
Building Information

Number of units:	460
Number of active listings for rent:	16
Number of active listings for sale:	13
Building inventory for sale:	2%
Number of sales over the last 12 months:	18
Number of sales over the last 6 months:	9
Number of sales over the last 3 months:	2

Building Association Information

Lavers Of Delray Racquet Club,
 Delray Racquet Club Association, Inc
 610 Egret Circle
 Delray Beach, FL 33444-7930
 (561) 276-3792

Market Information



Lavers Delray Racquet Club I to IX:	\$266/sq. ft.	Delray Beach:	\$366/sq. ft.
Delray Beach:	\$366/sq. ft.	Palm Beach:	\$472/sq. ft.

Inventory for Sale

Lavers Delray Racquet Club I to IX	3%
Delray Beach	2%
Palm Beach	3%

Avg. Time to Close Over Last 12 Months

Lavers Delray Racquet Club I to IX	77 days
Delray Beach	54 days
Palm Beach	58 days