

Unit Sea Rise A-307 - Jupiter Ocean & Racquet Club

Sea Rise A-307 - 1605 S US Hwy 1, Jupiter, FL, Palm Beach 33477

Unit Information

MLS Number:	RX-10995035
Status:	Withdrawn
Size:	860 Sq ft.
Bedrooms:	1
Full Bathrooms:	1
Half Bathrooms:	1
Parking Spaces:	Assigned,Guest
View:	Lake
Rental Price:	\$2,500
List PPSF:	\$3
Valuated Price:	\$362,000
Valuated PPSF:	\$421

The above valuated price is a baseline figure that does not take into account any specific renovation, upgrade, split, merge, or deterioration of the unit.

Building Information

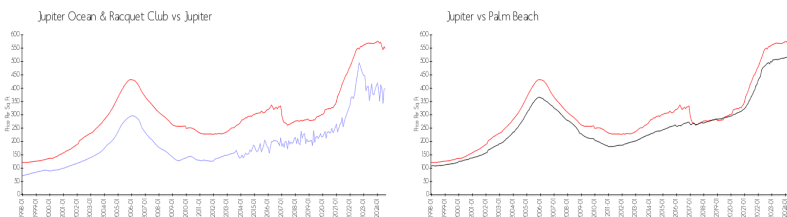
Number of units:	435
Number of active listings for rent:	0
Number of active listings for sale:	18
Building inventory for sale:	4%
Number of sales over the last 12 months:	21
Number of sales over the last 6 months:	10
Number of sales over the last 3 months:	5

Building Association Information

Jupiter Ocean & Racquet Club AssociationAddress: 1605 U.S. 1,
Jupiter, FL 33477
Phone:(561) 747-5331

<http://jorcinc.net/site/>

Market Information



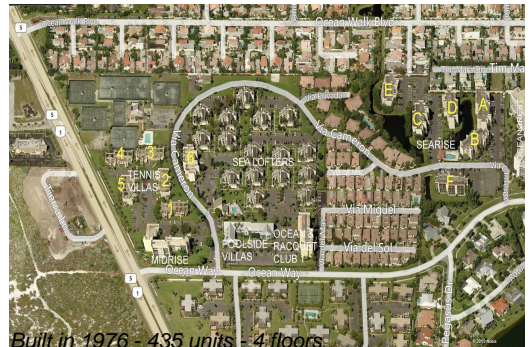
Jupiter Ocean & Racquet Club:	\$398/sq. ft.	Jupiter:	\$548/sq. ft.
Jupiter:	\$548/sq. ft.	Palm Beach:	\$471/sq. ft.

Inventory for Sale

Jupiter Ocean & Racquet Club	4%
Jupiter	3%
Palm Beach	3%

Avg. Time to Close Over Last 12 Months

Jupiter Ocean & Racquet Club	61 days
Jupiter	67 days
Palm Beach	58 days



Built in 1976 - 435 units - 4 floors