

Unit 316 - City Walk Pineapple Grove

316 - 200 NE 2 Av, Delray Beach, FL, Palm Beach 33444

Unit Information

MLS Number: RX-10995626
 Status: Active
 Size: 1,282 Sq ft.
 Bedrooms: 2
 Full Bathrooms: 2
 Half Bathrooms: 0
 Parking Spaces: Assigned, Guest
 View:
 List Price: \$794,900
 List PPSF: \$620
 Valuated Price: \$774,000
 Valuated PPSF: \$604

The above valuated price is a baseline figure that does not take into account any specific renovation, upgrade, split, merge, or deterioration of the unit.

Building Information

Number of units: 40
 Number of active listings for rent: 3
 Number of active listings for sale: 3
 Building inventory for sale: 7%
 Number of sales over the last 12 months: 1
 Number of sales over the last 6 months: 0
 Number of sales over the last 3 months: 0

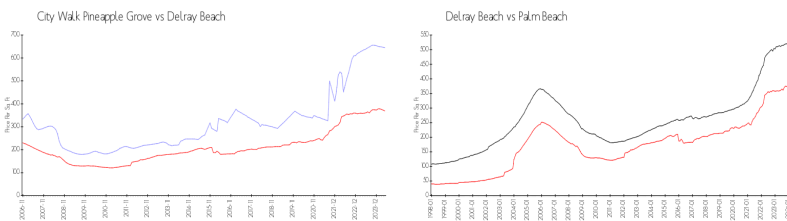
Building Association Information

City Walk At Pineapple Grove
 200 NE 2nd Ave, Delray Beach, FL 33444
 (561) 266-5970

Recent Sales

Unit #	Size	Closing Date	Sale Price	PPSF
410	1,531 sq ft	Oct 2023	\$950,000	\$621

Market Information



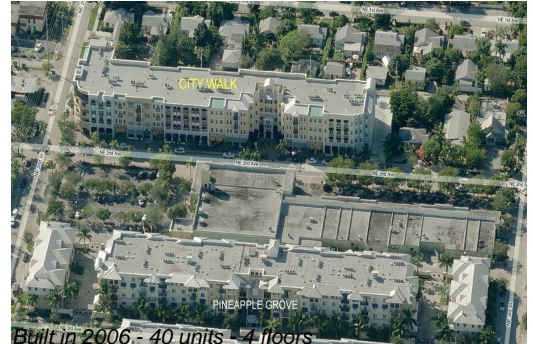
City Walk Pineapple Grove:	\$645/sq. ft.	Delray Beach:	\$369/sq. ft.
Delray Beach:	\$369/sq. ft.	Palm Beach:	\$474/sq. ft.

Inventory for Sale

City Walk Pineapple Grove: 8%
 Delray Beach: 2%
 Palm Beach: 3%

Avg. Time to Close Over Last 12 Months

City Walk Pineapple Grove: 89 days
 Delray Beach: 55 days



Palm Beach

57 days