

# Unit 724 Executive Center Dr # 8-36 - Clear Lake Club

724 Executive Center Dr # 8-36 - 700-760 Executive Center Dr, West Palm Beach, FL, Palm Beach 33401

## Unit Information

MLS Number: RX-10996048  
 Status: Active  
 Size: 794 Sq ft.  
 Bedrooms: 2  
 Full Bathrooms: 2  
 Half Bathrooms: 0  
 Parking Spaces:  
 View:  
 List Price: \$194,900  
 List PPSF: \$245  
 Valuated Price: \$185,000  
 Valuated PPSF: \$246

*The above valuated price is a baseline figure that does not take into account any specific renovation, upgrade, split, merge, or deterioration of the unit.*

## Building Information

Number of units: 316  
 Number of active listings for rent: 0  
 Number of active listings for sale: 1  
 Building inventory for sale: 0%  
 Number of sales over the last 12 months: 11  
 Number of sales over the last 6 months: 5  
 Number of sales over the last 3 months: 1

## Building Association Information

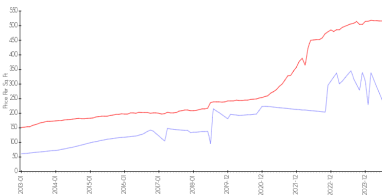
Clear Lake Palms Condo Association  
 Address: 401 Executive Center Dr,  
 West Palm Beach, FL 33401,  
 Phone:+1 561-697-4505

## Recent Sales

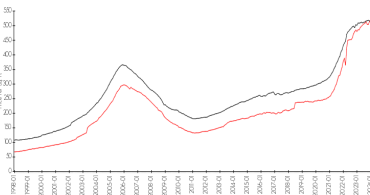
Unit #	Size	Closing Date	Sale Price	PPSF
11	502 sq ft	Jul 2024	\$175,000	\$349
28	794 sq ft	Apr 2024	\$175,000	\$220
17	794 sq ft	Apr 2024	\$178,000	\$224
36	502 sq ft	Feb 2024	\$173,000	\$345
23	502 sq ft	Feb 2024	\$168,000	\$335

## Market Information

Clear Lake Club vs West Palm Beach



West Palm Beach vs Palm Beach

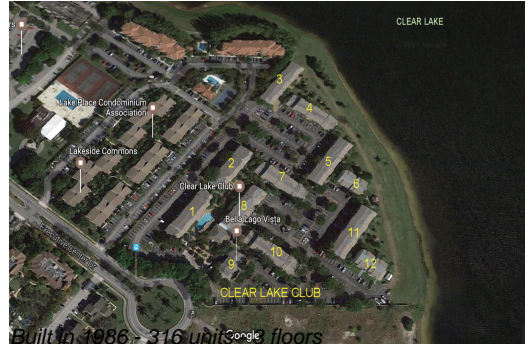


Clear Lake Club: \$243/sq. ft.  
 West Palm Beach: \$516/sq. ft.

West Palm Beach: \$516/sq. ft.  
 Palm Beach: \$474/sq. ft.

## Inventory for Sale

Clear Lake Club: 0%  
 West Palm Beach: 3%



Palm Beach

3%

**Avg. Time to Close Over Last 12 Months**

Clear Lake Club

25 days

West Palm Beach

54 days

Palm Beach

58 days